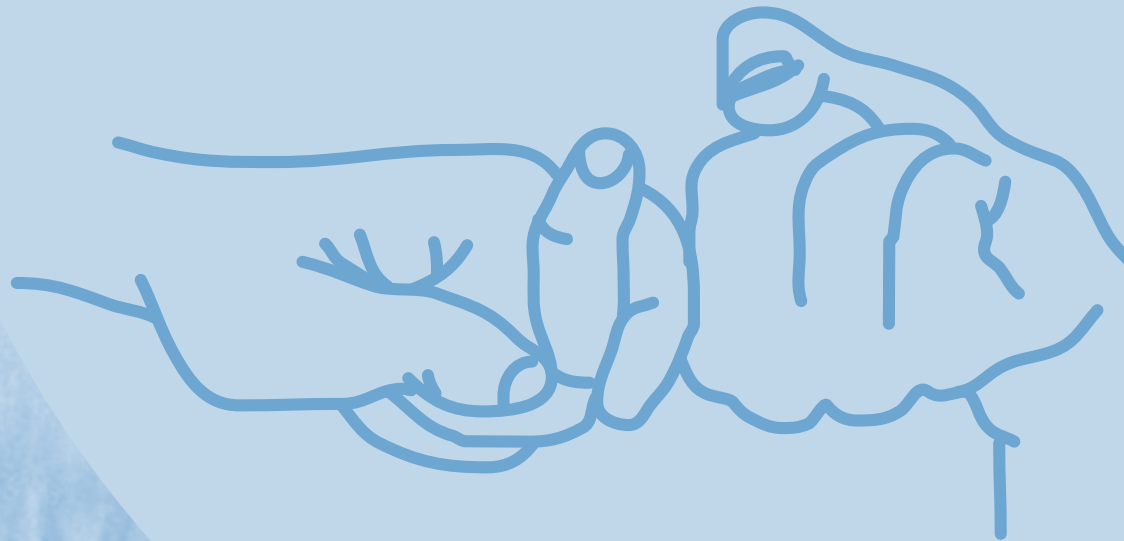


WASHINGTON STATE 2015 – 2017

# Directory of Services

for People Who are  
**Deaf, Hard of Hearing and Deaf-Blind**



Washington State  
Department of Social  
& Health Services

*Transforming lives*

# Office of the Deaf and Hard of Hearing

## “Washington State Directory of Services for People Who Are Deaf, Hard of Hearing and Deaf-Blind”

*Jay Inslee*

Office of the Governor  
State of Washington

*Kevin W. Quigley*

Secretary  
Department of Social and Health Services

*Bill Moss*

Assistant Secretary  
Aging and Long-Term Support Administration

*William Crites*

Interim Director  
Office of the Deaf and Hard of Hearing

---

### Copyright Permissions and Terms of Use

Please feel free to copy this Directory of Services without permission for non-profit, educational purposes only. Use of or reference to this Directory should credit the Office of the Deaf and Hard of Hearing.

### Disclaimer

The information contained in the Directory is for general information purposes only. The information is provided by the Office of the Deaf and Hard of Hearing (ODHH) and while the ODHH endeavors to keep the information up-to-date and correct, the ODHH makes no representations or warranties of any kind, express, or implied, about the completeness, accuracy, reliability, suitability or availability with respect to the information, products, services, or related graphics contained in the Directory for any purposes. Any reliance you place on such information is therefore strictly at your own risk.

In compiling this directory, ODHH has attempted to include as many relevant resources as it could. The inclusion or exclusion of a resource does not indicate or imply an endorsement or criticism by ODHH or DSHS. Likewise, any reference or link to a commercial product, process, service, or company does not indicate an endorsement of that product, process, service or company by ODHH or DSHS, and the omission of any such reference or link does not indicate disapproval by ODHH or DSHS.

This directory is intended to be a helpful starting point for persons seeking services, but further assessment of any resource is the responsibility of those persons.

### Alternative Formats

Upon request, this document is available in alternative formats for persons with disabilities.

# Table of Contents

Introduction.....	1
Office of the Deaf and Hard of Hearing.....	2
Telecommunication Relay Service .....	3
Regional Service Centers of the Deaf and Hard of Hearing .....	4
Department of Social and Health Services .....	6
State Government Agencies.....	8
Index .....	39

## **Topics:**

Assistive Technology.....	10
Captions .....	10
Community Organizations .....	10
Crisis Intervention .....	11
Deaf-Blind.....	12
Disabilities.....	13
Diversity.....	14
Education .....	14
Emergency Management .....	21
Employment .....	22
Families and Children.....	23
Hearing Aids - Financial Assistance.....	24
Hearing Loss .....	24
Housing .....	24
Human and Social Services.....	25
Interpreting.....	26
Interpreter Training Programs .....	28
Legal.....	28
Mental Health.....	30
Other - Businesses.....	32
Recreation .....	33
Senior Citizens / Aging.....	33
Service Animals.....	34
Sign Language .....	34
Telecommunications.....	38
Transportation .....	38



**Dear Stakeholders,**

The Office of the Deaf and Hard of Hearing provides information & referral to the general public. This is the third edition of the "Washington State Directory of Services for People who are Deaf, Hard of Hearing and Deaf-Blind" publication. This Directory is intended to be used as a guide.



Deaf, Hard of Hearing, Deaf-Blind individuals, their families, professionals, advocates, employees and other stakeholders can benefit from using the directory to obtain information about programs and services that provides equal access to effective communication in Washington State.

ODHH hopes that you will find the "Washington State Directory of Services for People who are Deaf, Hard of Hearing and Deaf-Blind" to be helpful and useful. It is important that you contact the agency or organization to learn more about their programs, services and activities and to determine if any resource will meet your specific needs. ODHH hopes that you will benefit and find our new online Directory of Services at <https://fortress.wa.gov/dshs/odhhapps/directory/resource.aspx> to be more accessible and convenient. The online version will contain national organizations. If you cannot find what you are looking for, please contact ODHH and we will be happy to assist you in finding appropriate resources that will meet your needs.

It is important that consumers have the opportunity to contact your organizations to learn more about the programs and services available and to help them determine if available resources will meet their specific needs. To update your information or have any comments, additions, omissions, changes, please submit the DSHS Form 10-443 "Organizations: Subscription and Directory Form" posted on the website. The Directory will be updated periodically online and republished every two years.

Thank you for helping us to connect the community needs and available services together. You may contact us as follows:

Office of the Deaf and Hard of Hearing  
P.O. Box 45301  
Olympia, WA 98504-5301  
800-422-7930 Voice/TTY  
360-902-8000 Voice/TTY  
360-339-7382 VP  
360-902-0855 Fax  
E-mail: [odhh@dshs.wa.gov](mailto:odhh@dshs.wa.gov)  
Website: <http://odhh.dshs.wa.gov>

Sincerely,

  
William Crites, Interim Director

# Office of the Deaf and Hard of Hearing

---

## Who do we serve?

Approximately 254,619 deaf and hard of hearing individuals live in the state of Washington. Four out of every 100 residents are deaf or hard of hearing. Washington State has one of the nation's largest deaf-blind population.

## What do we offer?

### **Telecommunication Relay Service (TRS)**

Relay operator services allows people with hearing loss to communicate effectively with others who do not have specialized telephone equipment, in a way similar to what a person with normal hearing and clear speech communicates with the telephone.

### **Telecommunication Equipment Distribution (TED)**

Specialized telephone equipment is available to eligible clients. Trainers provide client training on how to use the equipment.

### **Deaf Blind Services (DBS)**

Support Service Provider provides visual and environmental information. Communication Facilitator provides visual information access through close vision or tactile sign language during Video Relay Service and/or face to face calls via videophones and video relay services.

### **Sign Language Interpreter Management (SLIM)**

A statewide contract for interpreter services is available so that individuals using sign language can communicate with government employees.

### **Assistive Communication Technology (ACT)**

A loan & referral service provides assistive listening systems, real-time captioning and resources to other assistive technology.

### **Information & Referral (IR)**

Respond to requests for information and referral about available resources.

### **Outreach & Training (OT)**

Outreach activities increase awareness about diversity and culture. Training activities provide knowledge and skills to effectively serve people with hearing loss through the provision of reasonable accommodations.

### **Social & Human Services (SHS)**

Non-profit Regional Service Centers of the Deaf and Hard of Hearing provides case management services and a variety of social and human services throughout Washington.

*To request more information or obtain publications about the Office of the Deaf and Hard of Hearing and/or these programs & services, please contact ODHH at 360-902-8000 VITTY, 360-339-7382 VP or email at [odhh@dshs.wa.gov](mailto:odhh@dshs.wa.gov)*

# Telecommunication Relay Service (TRS)

**Telecommunication Relay Service**, better known as Washington Relay, is a free service that provides full telephone accessibility to people who are deaf, hard-of-hearing, deaf-blind, or have a speech disability.

- Washington Relay allows text-telephone (TTY) users to communicate with standard telephone users through specially trained Relay Operators (ROs).
- Washington Relay provides Captioned Telephone Service (CTS).
- Users can make calls to anywhere in the world, 24 hours a day, 365 days a year with no restrictions on the number, length, or type of calls.
- All calls are strictly confidential and no records of any conversations are maintained.
- Administered by the Washington State Office of the Deaf and Hard of Hearing and provided.

## Services are being offered through Washington Relay:

- Directory Assistance
- TTY public payphones
- Billing preferences
- Customer Database Profile
- Internet Relay
- Voice Carry-Over
- Captioned Telephone Service
- Speech to Speech
- Hearing Carry-Over
- Telebraille
- Spanish Relay
- Outreach
- And much more

## Washington Relay Customer Service

To contact Washington Relay Customer Service, please call (800) 676-3777 TTY/Voice/ASCII or Espanola (800) 676-4290 TTY/Voz/ASCII

- Receive assistance with a Relay call
- Make a complaint, suggestion, or comment
- Request brochures, outreach materials, or presentations

Email: [askwashingtonrelay@dshs.wa.gov](mailto:askwashingtonrelay@dshs.wa.gov)



## Regional Service Centers

The Office of the Deaf and Hard of Hearing (ODHH) partners with non-profit organizations to provide client services at Regional Service Centers (RSC) throughout the State of Washington. RSC's provide case management services to individuals who are deaf, hard of hearing and deaf-blind. These centers also respond to requests for information and referral on programs, services and resources serving on benefitting individuals who are deaf, hard of hearing and deaf-blind. Each RSC has an Assistive Listening System (ALS) for small groups, organizations, businesses and government agencies to borrow for use in improving amplification during meetings. RSC's have qualified staff available to provide education, training and consultation on making public facilities, services and programs accessible under the Americans with Disabilities Act (ADA) and other related laws to people who are deaf, hard of hearing, late deafened and deaf-blind.

### **Deaf-Blind Service Center (DBSC)**

1620 18th Ave., Suite 200  
Seattle, WA 98122

Serving Statewide  
(206) 455-7932 VP  
(206) 323-9178 Voice  
(206) 323-3644 TTY  
(206) 328-8497 Fax  
E-mail: [info@seattledbsc.org](mailto:info@seattledbsc.org)  
Website: [www.seattledbsc.org](http://www.seattledbsc.org)

### **Nexus – Spokane**

1206 N. Howard Street  
Spokane, WA 99201

Serving Chelan, Douglas, Ferry, Grant, Lincoln, Okanogan, Pend Oreille, Spokane, Stevens and Whitman counties

(509) 315-2288 Voice/VP  
(509) 328-9220 Voice/TTY  
(509) 327-4622 Front Office Fax  
E-mail: [info@nexusinw.com](mailto:info@nexusinw.com)  
Website: [www.nexusinw.com](http://www.nexusinw.com)

### **Hearing, Speech & Deafness Center (HSDC) - Bellingham**

114 West Magnolia Street Suite 106  
Bellingham, WA 98225

Serving Island, San Juan, Skagit and Whatcom

(866) 647-0910 Toll-free Voice  
(877) 647-8508 Toll-free TTY  
(360) 255-7167 Voice/VP  
(360) 647-0910 Voice  
(360) 647-8508 TTY  
(360) 647-0923 FAX  
E-mail: [bellingham@hsrc.org](mailto:bellingham@hsrc.org)  
Website: [www.hsrc.org](http://www.hsrc.org)

### **Hearing, Speech & Deafness Center (HSDC) - Seattle**

1625 19th Avenue  
Seattle, WA 98122

Serving Clallam, Jefferson, King, Kitsap and Snohomish counties

(888) 222-5036 Toll-free Voice  
(800) 761-2821 Toll-free TTY  
(206) 452-7953 Voice/VP  
(206) 323-5770 Voice  
(206) 388-1275 TTY  
(206) 328-6871 Fax  
E-mail: [seattle@hsrc.org](mailto:seattle@hsrc.org)  
Website: [www.hsrc.org](http://www.hsrc.org)



## Regional Service Centers

### **Hearing, Speech & Deafness Center (HSDC)**

#### **- Tacoma**

3516 S. 47th Street Suite 200  
Tacoma, WA 98409

Serving Grays Harbor, Mason, Peirce and Thurston counties

(866) 421-5560 Toll-free Voice  
(866) 698-1748 Toll-free TTY  
(253) 292-2209 Voice/VP  
(253) 475-0782 Voice  
(253) 474-1748 TTY  
(253) 475-1188 Fax  
E-mail: [tacoma@hsvc.org](mailto:tacoma@hsvc.org)  
Website: [www.hsvc.org](http://www.hsvc.org)

### **Southwest Washington Center of the Deaf and Hard of Hearing (SWCDHH) – Vancouver**

301 SE. Hearthwood Blvd.  
Vancouver, WA 98684

Serving Clark, Cowlitz, Lewis, Pacific, Skamania and Wahkiakum

(360) 334-5740 Voice/VP  
(360) 695-3364 Voice  
(360) 695-9720 TTY  
(360) 695-2706 FAX  
E-mail: [frontdesk@swcdhh.org](mailto:frontdesk@swcdhh.org)  
Website: [www.swcdhh.org](http://www.swcdhh.org)

# Department of Social and Health Services (DSHS)

*The mission of DSHS is to transform lives.*

If you have questions about the various services provided by DSHS Administrations, please contact the following address or the main phone numbers and they will transfer your call. Contact information is also provided on throughout the DSHS website: <https://www.dshs.wa.gov/>

## **EndHarm Report Child/Adult Abuse**

Phone: Central Intake 1(800) 624-6186

Phone: (800) 688-1213

Phone: (866) 363-4276 Voice/TTY

Website: [www.dshs.wa.gov/report-abuse-and-neglect](http://www.dshs.wa.gov/report-abuse-and-neglect)

## **Aging and Long-Term Support Administration (ALSA)**

Blake Office Park West 4450 - 10th Ave. SE  
Lacey, WA 98503

Phone: (800) 422-3263 Voice

Phone: (800) 422-7930 TTY

Phone: (360) 493-2637 TTY - Regional Office

Website: [www.dshs.wa.gov/altsa](http://www.dshs.wa.gov/altsa)

- Long-Term Care Services & Information
- Long-Term Care Professionals & Providers
- Office of the Deaf and Hard of Hearing
- ProviderOne

## **Complaint Resolution for Residential Care Services - Adult Protective Services**

Phone: (800) 562-6078 Voice

Phone: (800) 737-7931 TTY

Website: [www.dshs.wa.gov/altsa/home-and-community-services/reporting-abuse](http://www.dshs.wa.gov/altsa/home-and-community-services/reporting-abuse)

## **Behavioral Health and Service Integration Administration (BHSIA)**

Washington Recovery Help Line:  
1-866-789-1511

Phone: (206) 461-3219 TTY

Website: [www.dshs.wa.gov/bhsia](http://www.dshs.wa.gov/bhsia)

- Division of Behavioral Health and Recovery
- Medicare/Medicaid Integration Project
  - Mental Health Treatment
  - Problem Gambling Prevention & Treatment
  - Recovery Support
  - Substance Abuse Prevention and Mental Health Promotion
  - Substance Use Treatment

## **State Hospitals**

### **Child Study and Treatment Center**

8805 Steilacoom Blvd SW

Lakewood, WA 98498

Phone: (253)756-2322 Voice

Phone: (800) 283-8639 Voice

Phone: (253)756-3985 FAX

Website: [www.dshs.wa.gov/bhsia/division-state-hospitals/child-study-and-treatment-center](http://www.dshs.wa.gov/bhsia/division-state-hospitals/child-study-and-treatment-center)

### **Eastern State Hospital**

PO Box 800

Maple Street

Medical Lake, WA 99022-0800

Phone: (509) 565-4352 Voice

Phone: (509) 565-4705 FAX

Website: [www.dshs.wa.gov/bhsia/division-state-hospitals/eastern-state-hospital-overview](http://www.dshs.wa.gov/bhsia/division-state-hospitals/eastern-state-hospital-overview)

### **Western State Hospital**

9601 Steilacoom Blvd SW

Lakewood, Washington 98498-7213

Phone: (253) 582-8900 Voice

Phone: (253) 756-2879 FAX

Website: [www.dshs.wa.gov/bhsia/division-state-hospitals/western-state-hospital-general-information](http://www.dshs.wa.gov/bhsia/division-state-hospitals/western-state-hospital-general-information)

## **Children's Administration (CA)**

P.O. Box 45715

Olympia, WA 98504

Phone: (360) 725-6701 Voice

Phone: (888) 822-3541 Voice

E-mail: [constrelations@dshs.wa.gov](mailto:constrelations@dshs.wa.gov)

Website: [www.dshs.wa.gov/CA](http://www.dshs.wa.gov/CA)

- Advancing Child Welfare
- Adolescents
- Adoption
- Child Safety and Protection
- Contracted Providers
- Domestic Violence
- Foster Parenting
- Indian Child Welfare
- Parent Resources

# Department of Social and Health Services (DSHS)

## **Developmental Disabilities Administration (DDA)**

P.O. Box 45310  
Blake Office Park West  
4450 – 10th Ave., SE  
Olympia WA 98504-5310  
Phone: (360) 725-3413 Voice  
Phone: (360) 407-0955 Fax  
E-mail: [dddcoreception@dshs.wa.gov](mailto:dddcoreception@dshs.wa.gov)  
Website: [www.dshs.wa.gov/dda](http://www.dshs.wa.gov/dda)

- American Indians & Alaska Natives
- Autism Awareness
- Community Inclusion Newsletters
- DDA Assessment
- Early Support for Infants & Toddlers
- Eligibility
- Emergency Preparedness
- Events and Training
- Home Care Referral Agency
- Roads to Community Living
- Residential Provider Resources
- Residential Services
- Services and Programs (non-residential)
- Waiver Program
- County Best Practices
- Residential Provider Resources
- Personal Care Limitation Extension Process

## **Economic Services Administration (ESA)**

724 Quince St. SE  
Olympia, WA 98504  
Phone: (360) 725-4350 Voice  
Phone: (800) 833-6388 TTY  
Website: [www.dshs.wa.gov/esa/](http://www.dshs.wa.gov/esa/)

- Community Partnership Program
- Community Services Office
- Office of Financial Recovery
- Disability Determination Services
- Division of Child Support
- Office of Refugee and Immigrant Assistance

## **Financial Services Administration (FSA)**

P.O. Box 45045  
Olympia, WA 98504  
Phone: (360) 902-7805 Voice  
Phone: (360) 902-7848 FAX  
Website: [www.dshs.wa.gov/fsa](http://www.dshs.wa.gov/fsa)

- Background Checks
- Capital Programs
- Department Budget
- Electronic Forms
- Finance Services
- Language Testing & Certification
- Leased Facilities
- Ordering Forms
- Procurements & Contracting
- Record Schedules
- Tort Claims

## **Rehabilitation Administration (RA)**

P.O. Box 45045  
Olympia, WA 98504  
Phone: (360) 902-7805 Voice  
Phone: (360) 902-7848 FAX  
Website: [www.dshs.wa.gov/ra](http://www.dshs.wa.gov/ra)

- Division of Vocational Rehabilitation
- Juvenile Rehabilitation
- Office of Juvenile Justice
- Special Commitment Center

## **Services and Enterprise Support Administration (SESA)**

14th & Jefferson  
Olympia, WA 98504-5130  
Phone: (800) 737-0617 Voice  
E-mail: [AskDSHS@dshs.wa.gov](mailto:AskDSHS@dshs.wa.gov)  
Website: [www.dshs.wa.gov/SESA](http://www.dshs.wa.gov/SESA)

- Human Resources Division
- Information Systems Services Division
- Office of Communications
- Office of Continuous Improvement
- Office of Diversity and Inclusion
- Office of Fraud and Accountability
- Office of Indian Policy
- Office of Policy and External Relations
- Research and Data Analysis

# State Government Agencies

## **Access Washington**

Website: [www.access.wa.gov](http://www.access.wa.gov)

## **Washington Connection - Your Link to Services**

Website: [www.washingtonconnection.org/home/](http://www.washingtonconnection.org/home/)

## **Executive Branch**

---

### **Office of the Governor (GOV)**

PO Box 40002  
Olympia, WA 98504-0002  
Phone: (360) 902-4111 Voice  
Phone: (360) 753-4110 FAX  
Website: [www.governor.wa.gov](http://www.governor.wa.gov)

### **Office of the Attorney General (AG)**

PO Box 40100  
Olympia, WA 98504-0100  
Phone: (360) 753-6200 Voice  
Phone: (800) 833-6384  
Website: <http://www.atg.wa.gov/>

### **Office of Education Ombudsman (OEO)**

Northgate Executive Center 1, Bldg. B  
155 NE 100th Street, Suite 210  
Seattle, WA 98125-8012  
Phone: (866) 297-2597 Voice  
E-mail: [OEOinfo@gov.wa.gov](mailto:OEOinfo@gov.wa.gov)  
Website: [www.governor.wa.gov/oeo/](http://www.governor.wa.gov/oeo/)

### **Office of the Secretary of State (SOS)**

PO Box 40220  
Olympia, WA 98504-0220  
Phone: (360) 902-4151 Voice  
Phone: (800) 422-8683 TTY  
Phone: (360) 586-5629 FAX  
E-mail: [mail@secstate.wa.gov](mailto:mail@secstate.wa.gov)  
Website: [www.secstate.wa.gov](http://www.secstate.wa.gov)

### **Office of Superintendent of Public Instruction (OSPI)**

PO Box 47200  
Olympia, WA 98504-7200  
Phone: (360) 725-6000 Voice  
Phone: (360) 664-3631 TTY  
Phone: (360) 725-6075 Voice  
Phone: (360) 586-0126 TTY  
Website: [www.k12.wa.us](http://www.k12.wa.us)

### **Office of the Insurance Commissioner (OIC)**

P.O. Box 40256  
Olympia, WA 98504-0256  
Phone: (800) 562-6900 Voice  
Phone: (360) 752-7080 Voice  
Phone: (360) 586-0241 TTY  
Phone: (360) 586-2018 FAX  
E-mail: [CAP@oic.wa.gov](mailto:CAP@oic.wa.gov)  
Website: [www.insurance.wa.gov](http://www.insurance.wa.gov)

## **General Government**

---

### **Department of Enterprise Services (DES)**

1500 Jefferson Street SE  
Olympia, WA 98501  
Phone: (360) 407-9200 Voice  
E-mail: [customermanagement@des.wa.gov](mailto:customermanagement@des.wa.gov)  
Website: <http://des.wa.gov/>

### **Office of Administrative Hearings (OAH)**

2420 Bristol Court SW  
PO Box 42488  
Olympia, WA 98504-2488  
Phone: (360) 407-2700 Voice  
Phone: (360) 664-8721 FAX  
Website: [www.oah.wa.gov](http://www.oah.wa.gov)

### **Office of Financial Management (OFM)**

PO Box 43113  
Olympia, WA 98504-3113  
Phone: (360) 902-0555 Voice  
E-mail: [ofm.administration@ofm.wa.gov](mailto:ofm.administration@ofm.wa.gov)  
Website: [www.ofm.wa.gov/](http://www.ofm.wa.gov/)

### **Public Disclosure Commission (PDC)**

711 Capitol Way #206  
Olympia, WA 98504-0908  
Phone: (877) 601-2828 Voice  
Phone: (360) 753-1111 Voice  
Phone: (360) 753-1112 FAX  
E-mail: [pdc@pdc.wa.gov](mailto:pdc@pdc.wa.gov)  
Website: [www.pdc.wa.gov/](http://www.pdc.wa.gov/)

# State Government Agencies

## Judiciary Branch

---

### **Administrative Office of the Courts (AOC)**

1206 Quince Street SE  
PO Box 41170  
Olympia, WA 98504  
Phone: (360) 705-5302 Voice  
Phone: (360) 956-5700 FAX  
E-mail: shirley.bondon@courts.wa.gov  
Website: www.courts.wa.gov

### **Office of Civil Legal Aid (OCLA)**

1112 Quince Street SE  
Olympia, WA 98504  
Phone: (360) 704-4135 Voice  
Phone: (360) 704-4003 FAX  
Website: www.ocla.wa.gov  
Office of Public Defense (OPD)

### **Evergreen Plaza Building**

711 Capitol Way South, Suite 106  
PO Box 40957  
Olympia, WA 98504-0957  
Phone: (360) 586-3164  
Phone: (360) 586-8165 FAX  
E-mail: opd@opd.wa.gov  
Website: www.opd.wa.gov/

### **Washington State Law Library (WSLL)**

Temple of Justice  
415 - 12th Ave. SW  
Olympia, WA 98501  
Phone: (360) 357-2136 Voice  
Phone: (360) 357-2153 FAX  
E-mail: library.requests@courts.wa.gov  
Website: www.courts.wa.gov/library/

## Legislative Branch

---

### **Washington State Legislature**

Legislative Information Center  
106 Legislative Building  
Olympia, WA 98504  
Phone: (360) 786-7573 Voice  
Phone: (800) 635-9993 TTY  
E-mail: support@leg.wa.gov  
Website: www.leg.wa.gov

To request reasonable accommodations (interpreters, real-time captioning, assistive listening systems, publications in alternative format, etc.) the contact is as follows:

### **For the Senate:**

#### **Lucretia Turner**

Senate Sergeant-at-Arms Office  
P. O. Box 40482  
Olympia, WA 98504-0482  
Phone: (360) 786-7189 Voice

### **For the House:**

#### **Ken Conte**

House Office of Program Research  
P. O. Box 40600  
Olympia, WA 98504-0600  
Phone: (360) 786-7101 Voice  
Phone: (800) 635-3933 TTY

## Topics

### Assistive Technology

---

#### **Enhanced Vision, Vision Matters, LLC**

13510 NE 188th Place  
Woodinville, WA 98072  
Phone: (888) 281-1492 Voice  
Phone: (425) 892-0602 FAX  
E-mail: dennis@visionmatters.net  
Website: www.visionmatters.net

#### **Hearing, Speech & Deafness Center Store (HSDC)**

##### **Seattle Location**

1625 - 19th Avenue  
Seattle, WA 98122

##### **Bellingham Location**

114 West Magnolia Street, Suite 105  
Bellingham WA 98225  
Phone: (206) 323-5770 Voice/TTY  
Phone: (888) 328-2974 Voice/TTY  
Phone: (206) 328-6871 FAX  
E-mail: store@hsdc.org  
Website: www.hsdystore.com

#### **Washington Access Fund (WAF)**

100 South King Street, Suite 280  
Seattle, WA 98104  
Phone: (206) 328-5116 Voice  
Phone: (877) 428-5116 Voice  
Phone: (888) 494-4775 TTY  
Phone: (206) 328-5126 FAX  
E-mail: info@washingtonaccessfund.org  
E-mail: Leann@washingtonaccessfund.org  
Website: www.washingtonaccessfund.org

#### **Washington Assistive Technology Act Program (WATAP)**

University of Washington  
P.O. Box 357920  
Seattle, WA 98195  
Phone: (800) 214-8731 Voice  
Phone: (866) 866-0162 TTY  
Phone: (206) 543-4779 FAX  
E-mail: watap@uw.edu  
Website: www.watap.org

### Captions

---

#### **Washington Court Reporters Association (WCRA)**

Website: www.washingtoncourtreporters.org

#### **Department of Enterprise Services (DES)**

1500 Jefferson Street SE  
Olympia, WA 98501  
Phone: (360) 664-6211 TTY  
Phone: (360) 664-1960 Voice  
Phone: (877) 664-1960 Voice  
E-mail: information@dop.wa.gov  
Website: http://des.wa.gov/

#### **Communication Access Real Time Translation (CART):**

<https://fortress.wa.gov/ga/apps/ContractSearch/ContractSummary.aspx?c=07010>

#### **Stanton Captioning and Reporting On-Site and Remote CART/Captioning Services**

Vanessa Stanton  
Vancouver, WA  
Phone: (360) 606-4228  
E-mail: vcstanton29@clear.net

### Community Organizations

---

#### **Association of Late Deafened Adult (ALDA) - Puget Sound Chapter**

Virginia Mason Medical Center  
35501 - 1st Way South  
Federal Way, WA 98003  
Phone: (206) 767-3214 Voice  
E-mail: paulat@centurylink.net  
E-mail: info@alda.org  
Website: <http://www.alda-pugetsound.com/>

#### **Cochlear Implant Support Group - South Sound**

Phone: (253) 256-3938 VP  
Phone: (253) 256-4690 Voice  
E-mail: Christine@CS-DHHRS.com  
Website: www.CS-DHHRS.com

## Topics

### **Hearing Loss Association of Washington (HLA-WA)**

4820 – 156th Place SW  
Edmonds, WA 98026-4846  
Phone: (425) 742-3228 Voice/TTY/FAX  
E-Mail: info@hearingloss-wa.org  
E-mail: chapters@hearingloss-wa.org  
Website: <http://www.hearingloss-wa.org/>  
Website: <http://www.loopseattle.org>

### **HLA-WA Chapter Listings –**

Please check website for updates on chapters at  
<http://hearingloss-wa.org/chapters/>

### **Let's Loop Seattle**

11810 - 209th Ave. NE  
Redmond, WA 98053  
Phone: (425) 785-4904 Voice  
E-mail: loopseattle@gmail.com  
E-mail: cheripz@gmail.com  
Website: [www.loopseattle.org](http://www.loopseattle.org)

### **Puget Sound Association of the Deaf**

2407 1/2 NW 60th Street  
Seattle, WA 98107  
Phone: (206) 452-0824 VP  
E-mail: president@psadeaf.org  
E-mail: secretary@psadeaf.org  
Website: [www.psadeaf.org](http://www.psadeaf.org)

### **Seattle Public Library Deaf Services**

Library Equal Access Program (LEAP)  
1000 - 4th Ave  
Seattle, WA 98104  
Phone: (206) 615-1380 Voice  
E-mail: leap@spl.org  
E-mail: cleo.brooks@spl.org  
Phone: (206) 386-4690 Voice/TTY  
Website: [www.spl.org](http://www.spl.org)

### **Sertoma**

P.O. Box 1003  
Tacoma, WA 98401  
E-mail: lldobner@msn.com  
Website: [www.sertoma.org](http://www.sertoma.org)

### **Washington State Association of the Deaf (WSAD)**

P.O. Box 15890  
Seattle, WA 98115  
E-mail: info@wsad.org  
E-mail: president@wsad.org  
Website: [www.wsad.org](http://www.wsad.org)

### **Washington Gallaudet University Alumni Association (WAGUAA)**

PO Box 3512  
Lynnwood, WA 98043  
E-mail: waguaasecy@gmail.com  
Website: [www.waguaa.org](http://www.waguaa.org)

### **Washington State Deaf Senior Citizens (WSDSC)**

PO Box 145  
Lynden, WA 98264  
Phone: (360) 707-7597 VP  
E-mail: ellenscheppach@yahoo.com  
E-Mail: vanscheppach@yahoo.com

## Crisis Intervention

---

### **Abused Deaf Women's Advocacy Services (ADWAS)**

8623 Roosevelt Way NE  
Seattle, WA 98115  
Phone: (206) 922-7088 VP  
Phone: (206) 726-0017 FAX  
E-mail: adwas@adwas.org  
Website: [www.adwas.org](http://www.adwas.org)

### **National Domestic Violence Hotline through ADWAS**

Phone: 1-855-812-1001 VP  
Phone: ADWAS Main Office (206) 922-7088 VP  
Phone: 1- 800-787-3224 TTY  
Phone: 1-800-799-7233 Voice  
AIM: DeafHotline  
E-mail: Deafhelp@thehotline.org  
Website: [www.adwas.org/hotline/national/](http://www.adwas.org/hotline/national/)



## Topics

### **Victim Support Services**

P.O. Box 1949  
Everett, WA 98206  
Phone: (425) 259-0784 TTY  
Phone: (425) 252-6081 Voice  
Phone: (800) 346-7555 Voice  
Phone: (425) 259-1730 FAX  
E-mail: [contactus@victimsupportservices.org](mailto:contactus@victimsupportservices.org)  
Website: [www.victimsupportservices.org](http://www.victimsupportservices.org)

## Deaf-Blind

---

### **Deaf-Blind Service Center (DBSC)**

1620 18th Ave., Suite 200  
Seattle, WA 98122  
Phone: (206) 455-7932 Voice/VP  
Phone: (206) 323-9178 TTY  
Phone: (206) 328-8497 FAX  
E-mail: [info@seattledbsc.org](mailto:info@seattledbsc.org)  
Website: [www.seattledbsc.org](http://www.seattledbsc.org)

### **Angela Theriault**

Position: Executive Director  
E-mail: [atheriault@seattledbsc.org](mailto:atheriault@seattledbsc.org)

### **Department of Services for the Blind (DSB)**

4565 7th Avenue SE  
Lacey, WA 98503  
Phone: (800) 552-7103 Voice  
Phone: (206) 721-4056 TTY  
Phone: (360) 407-0679 FAX  
E-mail: [info@dsb.wa.gov](mailto:info@dsb.wa.gov)  
Website: [www.dsb.wa.gov](http://www.dsb.wa.gov)

### **Helen Keller National Center- Northwestern Region (HKNC)**

1620 18th Avenue, Suite 201  
Seattle, WA 98122  
Phone: (206) 324-1133 CaptionCall  
Phone: (206) 452-0049 VP  
Phone: (206) 324-1920 Voice/TTY  
Phone: (206) 324-9159 FAX  
E-mail: [dorothy.walt@hknc.org](mailto:dorothy.walt@hknc.org)  
Website: [www.hknc.org/](http://www.hknc.org/)

### **Inland Northwest Lighthouse (INL)**

6405 N. Addison Street  
Spokane, WA 99208  
Phone: (509) 487-0405 Voice  
Phone: (206) 452-5715 VP  
Phone: (206) 436-2234 FAX  
Website: <http://seattlelighthouse.org/inl/>

### **Lighthouse for the Blind, Inc. (LH)**

2501 South Plum Street  
Seattle, WA 98144  
PO Box 14959  
Seattle, WA 98114  
Phone: (206) 322-4200 Voice/TTY  
Phone: (206) 452-5715 VP  
Phone: (206) 436-2234 FAX  
E-mail: [Akoehl@SeattleLH.org](mailto:Akoehl@SeattleLH.org)  
Website: <http://seattlelighthouse.org/>

### **Washington Sensory Disabilities Services (WSDS)**

#### **Washington State Services for Children with Deaf-Blindness**

800 Oakesdale Avenue SW  
Renton, WA 98057  
Phone: (800) 572-7000 Voice  
Phone: (425) 917-7827 Voice  
Phone: (425) 917-7838 Fax  
E-mail: [wdsd@psesd.org](mailto:wdsd@psesd.org)  
Website: [www.wsdsonline.org](http://www.wsdsonline.org)

### **Washington State Deaf-Blind Citizens (WSDBC)**

P.O. Box 2322  
Seattle, WA 98111  
E-mail: [wdsdbcprez@gmail.com](mailto:wdsdbcprez@gmail.com)  
Website: [www.wdsdbc.org](http://www.wdsdbc.org)

### **Washington State School for the Blind (WSB)**

2214 E. 13th Street  
Vancouver, WA 98661  
Phone: (360) 696-6321 Voice  
Phone: (360) 737-2120 FAX  
Website: [www.wssb.wa.gov](http://www.wssb.wa.gov)



## Topics

### **Washington Talking Book and Braille Library (WTBBL)**

2021 - 9th Ave.  
Seattle, WA 98121-2783  
Phone: (206) 615-0400 Voice  
Phone: (800) 542-0866 Voice  
Phone: (206) 615-0437 FAX  
E-mail: [wtbbl@sos.wa.gov](mailto:wtbbl@sos.wa.gov)  
Website: [www.wtbbl.org](http://www.wtbbl.org)

## Disabilities

---

### **Alliance of People with disAbilities**

1120 E. Terrace Ste. 100  
Seattle, WA 98122  
Phone: (206) 545-7055 Voice  
Phone: (800) 545-7055 Voice  
Phone: (206) 545-7059 FAX  
E-mail: [info@disabilitypride.org](mailto:info@disabilitypride.org)  
Website: [www.disabilitypride.org](http://www.disabilitypride.org)

### **Center for Independence**

7801 Bridgeport Way W. Ste. #200  
Lakewood, WA 98499  
Phone: (253) 582-1253 Voice  
Phone: (800) 724-8172 Voice  
Phone: (253) 584-4374 FAX  
E-mail: [connect@centerforindependence.org](mailto:connect@centerforindependence.org)  
Website: [www.centerforindependence.org](http://www.centerforindependence.org)

### **Center for Independence North Sound**

114 W. Magnolia Ste. #104  
Bellingham, WA 98225  
Phone: (360) 393-3890 Voice  
Phone: (888) 482-4839 Voice  
Phone: (360) 778-1743 FAX  
E-mail: [info@cfnorth.org](mailto:info@cfnorth.org)  
Website: [www.cfnorth.org](http://www.cfnorth.org)

### **Coalition of Responsible Disabled (CORD)**

612 North Maple St  
Spokane, WA 99201  
Phone: (509) 326-6355 Voice/TTY  
Phone: (877) 606-2680 Voice  
Phone: (509) 327-2420 FAX  
E-mail: [info@scilwa.org](mailto:info@scilwa.org)  
Website: <http://www.wasilc.org/about/ACIL.html>

### **Easter Seals Washington**

200 W. Mercer Street, Suite E -120  
Seattle, WA 98119 - 4347  
Phone: (206) 281-5700 Voice  
Phone: (206) 284-0938 FAX  
E-mail: [info@wa.easterseals.com](mailto:info@wa.easterseals.com)  
Website: [www.wa.easterseals.com](http://www.wa.easterseals.com)

### **Puget Sound Regional Services (Supported Living Program)**

149 Park Avenue North, Suite "A"  
Renton, WA 98057  
PO Box 2577  
Renton, WA 98056  
Phone: (206) 772-5700 Voice  
Phone: (206) 267-0024 TTY  
Phone: (206) 772-4937 FAX  
E-mail: [chigman@gopsrs.org](mailto:chigman@gopsrs.org)  
E-mail: [pganliker@gopsrs.org](mailto:pganliker@gopsrs.org)  
Website: <http://www.gopsrs.org>

### **State Independent Living Council (SILC) 4565 7Th Avenue SE**

Lacey, WA 98503  
Phone: (360) 725-3692 Voice  
Phone: (800) 624-4105 Voice  
Phone: (360) 407-3899 FAX  
E-mail: [velaem@dshs.wa.gov](mailto:velaem@dshs.wa.gov)  
Website: <http://www.wasilc.org>

### **Washington State Developmental Disabilities Council (WSDDC)**

2600 Martin Way E. Ste. F  
Olympia, WA 98504  
PO Box 48314  
Olympia, WA 98504  
Phone: (360) 586-3560 Voice  
Phone: (800) 634-4473 Voice  
E-mail: [linda.west@ddc.wa.gov](mailto:linda.west@ddc.wa.gov)  
Website: [www.ddc.wa.gov](http://www.ddc.wa.gov)

### Diversity

---

#### **Commission on African American Affairs (CAAA)**

General Administration Building  
210-11th Avenue SW, Suite 301A  
Olympia, WA 98504  
Phone: (360) 725-5664 Voice  
E-mail: [ed.prince@caa.wa.gov](mailto:ed.prince@caa.wa.gov)  
Website: <http://www.caa.wa.gov/contact/StaffContactInfo.shtml>

#### **Commission on Asian Pacific American Affairs (CAPAA)**

General Administration Building  
210-11th Avenue SW, Suite 301  
Olympia, WA 98504  
Phone: (360) 725-5667 Voice  
Phone: (360) 360-586-9501  
E-mail: [capaa@capaa.wa.gov](mailto:capaa@capaa.wa.gov)  
Website: <http://www.capaa.wa.gov/contact/index.shtml>

#### **Commission on Hispanic Affairs (CHA)**

P.O. Box 40924  
Olympia, WA 98504  
Phone: (800) 443-0294 Voice  
Phone: (360) 725-5661 Voice  
Phone: (360) 586-9501  
E-mail: [hispanic@cha.wa.gov](mailto:hispanic@cha.wa.gov)  
Website: <http://www.cha.wa.gov/>

#### **Governor's Office of Indian Affairs (GOIA)**

General Administration Building  
210-11th Avenue SW, Suite 415  
Olympia, WA 98504  
Phone: (360) 902-8825 Voice  
Phone: (360) 902-8829 FAX  
E-mail: [mystique.hurtado@goia.wa.gov](mailto:mystique.hurtado@goia.wa.gov)  
Website: [www.goia.wa.gov](http://www.goia.wa.gov)

#### **Office of Diversity and Inclusion (ODI)**

1115 Washington St. SE  
Olympia, WA 98504  
Phone: (360) 902-7999  
E-mail: [crosses2@dshs.wa.gov](mailto:crosses2@dshs.wa.gov)  
Website: <http://www.dshs.wa.gov/sesa/office-diversity-and-inclusion>

#### **Office of Indian Policy (OIP)**

PO Box 45105  
Olympia, Washington 98504-5105  
Phone: (360) 902-7706 Voice  
Website: <http://www.dshs.wa.gov/sesa/office-indian-policy>

#### **Office of Minority and Women's Business Enterprise (MWBE)**

General Administration Building  
210-11th Avenue SW, Suite 401  
Olympia, WA 98501  
Phone: (866) 208-1064 Voice  
Phone: (360) 586-7079 FAX  
E-mail: [receptionist@omwbe.wa.gov](mailto:receptionist@omwbe.wa.gov)  
Website: <http://omwbe.wa.gov/>

### Education

---

#### **Office of Education Ombudsman (OEO)**

Northgate Executive Center 1, Bldg. B  
155 NE 100th Street, Suite 210  
Seattle, WA 98125-8012  
Phone: (866) 297-2597 Voice  
E-mail: [OEOinfo@gov.wa.gov](mailto:OEOinfo@gov.wa.gov)  
Website: <http://www.governor.wa.gov/oeo/>

#### **Office of Superintendent of Public Instruction (OSPI)**

PO Box 47200  
Olympia, WA 98504-7200  
Phone: (360) 725-6000 Voice  
Phone: (360) 664-3631 TTY  
Phone: (360) 725-6075 Voice  
Phone: (360) 586-0126 TTY  
Website: [www.k12.wa.us](http://www.k12.wa.us)

## Topics

### K-12 Programs – STATEWIDE

---

#### **Center for Childhood Deafness and Hearing Loss (CDHL)**

##### **Outreach Team**

611 Grand Boulevard  
Vancouver WA 98661-4918  
Phone: (855) 342-1670 Voice  
E-mail: [outreachteam@cdhl.wa.gov](mailto:outreachteam@cdhl.wa.gov)  
Website: [www.cdhl.wa.gov](http://www.cdhl.wa.gov)

##### **Washington School for the Deaf (WSD)**

611 Grand Boulevard  
Vancouver, WA 98661  
Phone: (800) 613-4228 Voice/TTY  
Phone: (360) 696-6525 Voice/TTY  
Phone: (360) 696-6291 Fax  
Website: [www.wsd.wa.gov](http://www.wsd.wa.gov)

#### **Washington Sensory Disabilities Services (WSDS)**

800 Oakesdale Avenue SW  
Renton, WA 98057  
Phone: (800) 572-7000 Voice/TTY  
Phone: (425) 917-7827 Voice/TTY  
E-Mail: [wdsd@psed.org](mailto:wdsd@psed.org)  
Website: [www.wsdsonline.org](http://www.wsdsonline.org)

#### **Washington Sensory Disabilities Services (WSDS)**

Deaf and Hard of Hearing Students Educational Services  
WSDS/CWU - 7409  
400 E. University Way  
Ellensburg, WA 98926  
Phone: (509) 359-8035 VP  
Phone: (509) 963-1131 Voice  
Website: [www.wsdsonline.org](http://www.wsdsonline.org)

##### **Carol Carrothers**

Position: Coordinator of Deaf/Hard of Hearing Services  
E-mail: [carolc@cwu.edu](mailto:carolc@cwu.edu)

#### **Washington State School for the Blind (WSSB)**

2214 E. 13th Street  
Vancouver, WA 98661  
Phone: (360) 696-6321 Voice  
Phone: (360) 737-2120 FAX  
Website: <http://www.wssb.wa.gov/>

### Private Schools

---

#### **Listen and Talk - Education for Children with Hearing Loss**

8610 8th Ave NE  
Seattle, WA 98115  
Phone: (206) 985-6646 Voice  
Phone: (206) 985-6687 FAX  
E-mail: [suzanneq@listentalk.org](mailto:suzanneq@listentalk.org)  
Website: [www.listentalk.org](http://www.listentalk.org)

#### **Northwest School for Deaf and Hard of Hearing Children**

15303 Westminster Way North  
Shoreline WA 98133  
Phone: (206) 364-4605 Voice/TTY  
Phone: (206) 367-3014 FAX  
E-mail: [n.miller@northwestschool.com](mailto:n.miller@northwestschool.com)  
Website: [www.northwestschool.com](http://www.northwestschool.com)

### School Districts

---

To find out if your school district has an oral, residential, mainstreamed or deaf and hard of hearing program, there is a directory that includes the following school personnel: administrators, audiologists, teachers of the Deaf, educational interpreters and sign language programs available at <http://www.wsdsonline.org/deafhh/directory.html>

#### **Edmonds School District**

9300 - 236th St. SW  
Edmonds, WA 98020  
Phone: (206) 556-7695 VP  
Phone: (425) 431-7213 Voice  
Phone: (425) 431-7985 FAX  
Website: [www.edmonds.wednet.edu](http://www.edmonds.wednet.edu)

##### **Alicia Carter**

Position: Program Director  
E-mail: [cartera@edmonds.wednet.edu](mailto:cartera@edmonds.wednet.edu)

## Topics

### **Evergreen School District**

Special Education Department  
14619-B NE 49th Street  
Vancouver, WA 98668  
Phone: (360) 604-6700 Voice  
Phone: (360) 604-6702 FAX  
E-Mail: [Cynthia.Christensen@EvergreenPS.org](mailto:Cynthia.Christensen@EvergreenPS.org)  
Website: <http://www.evergreenps.org/Pages/default.aspx>

### **Federal Way Public Schools**

33330 8th Avenue S.  
Federal Way, WA 98003  
Phone: (253) 945-2000 Voice  
Phone: (253) 945-4582 FAX  
E-mail: [comments@fwps.org](mailto:comments@fwps.org)  
E-mail: [librown@fwps.org](mailto:librown@fwps.org)  
Website: <http://www.fwps.org/dept/sped/hearing/>

### **Highline Public Schools**

Special Services  
15675 Ambaum Blvd. SW  
Burien, WA 98146  
Phone: (206) 631-3231 Voice  
E-mail: [Deborah.Holcomb@highlineschools.org](mailto:Deborah.Holcomb@highlineschools.org)  
Website: <http://www.highlineschools.org/site/Default.aspx?PageID=209>

### **North Thurston Public Schools**

305 College Street NE  
Lacey, WA 98516  
Phone: (360) 412-4482 Voice  
Phone: (360) 412-4557 FAX  
Maddy deGive, Director of Special Education  
(360) 412-4466 Voice  
E-mail: [mdegive@nthurston.k12.wa.us](mailto:mdegive@nthurston.k12.wa.us)  
Website: [www.nthurston.k12.wa.us](http://www.nthurston.k12.wa.us)

### **Orting High School**

320 Washington Ave. North  
Orting, WA 98360  
Phone: (360) 893-2246 Voice  
E-mail: [hirschkornm@orting.wednet.edu](mailto:hirschkornm@orting.wednet.edu)  
Website: [www.orting.wednet.edu](http://www.orting.wednet.edu)

### **Puyallup School District**

Puyallup Special Services  
214 West Main  
Puyallup, WA 98371  
(253) 841-8700 Voice  
(253) 841-8655 Fax  
Karen Mool, Assistant Director of Special Services  
Email: [moolkm@puyallup.k12.wa.us](mailto:moolkm@puyallup.k12.wa.us)  
Email: [spec-servs@puyallup.k12.wa.us](mailto:spec-servs@puyallup.k12.wa.us)  
Website: [www.puyallup.k12.wa.us](http://www.puyallup.k12.wa.us)

### **Seattle Public Schools**

2445 - 3rd Ave. South  
Seattle, WA 98134  
Phone: (206) 252-0058 Voice  
Phone: (206) 252-0053 FAX  
E-mail: [special@seattleschools.org](mailto:special@seattleschools.org)  
Website: [www.seattleschools.org](http://www.seattleschools.org)

### **Tacoma School District #10**

P.O. Box 1357  
Tacoma, WA 98401  
Phone: (253) 571-1000 Voice  
E-mail: [csantor@tacoma.k12.wa.us](mailto:csantor@tacoma.k12.wa.us)  
Website: <http://www.tacoma.k12.wa.us/information/departments/student-services/Pages/DeafAndHardOfHearing.aspx>

## **Disability Support Services at Community & Technical Colleges**

---

### **Bates Technical College**

Downtown Campus, Room M212  
1101 South Yakima Avenue  
Tacoma, WA 98405  
Phone: (253) 680-7000 Voice  
Phone: (253) 680-7013 Voice  
Phone: (253) 680-7010 Voice  
E-mail: [dss@bates.ctc.edu](mailto:dss@bates.ctc.edu)  
Website: [www.bates.ctc.edu](http://www.bates.ctc.edu)

## Topics

### **Big Bend Community College**

Disability Support Services, Office 1481  
7662 Chanute Street N.E.  
Moses Lake, WA 98837  
Phone: (509) 762-2222 Voice  
Phone: (509) 793-2027 Voice  
Phone: (509) 762-6335 TTY  
E-mail: [loraa@bigbend.edu](mailto:loraa@bigbend.edu)  
Website: [www.bigbend.edu](http://www.bigbend.edu)

### **Cascadia Community College**

Disability Support Services  
Kodiak Corner/Student Services Center  
18345 Campus Way NE  
Bothell, WA 98011  
Phone: (425) 352-8128 Voice  
Phone: (425) 352-8000 Voice  
Phone: (425) 352-8137 Fax  
E-mail: [disabilities@cascadia.edu](mailto:disabilities@cascadia.edu)  
Website: <http://www.cascadia.edu/>

### **Centralia Community College**

Center for Disability Services  
Student Center Building, Counseling Center  
600 Centralia College Blvd.  
Centralia, WA 98531  
Phone: (360) 736-9391 ext. 320 Voice  
Phone: (360) 753-3433 ext. 320 Voice  
Phone: (360) 807-6227 TTY  
E-mail: [mhoel@centralia.edu](mailto:mhoel@centralia.edu)  
Website: [www.centralia.edu/students/disabilities/](http://www.centralia.edu/students/disabilities/)

### **Clover Park Technical College**

4500 Steilacoom Blvd  
Lakewood, WA 98499  
Phone: (253) 589-5800 Voice  
Website: <http://www.cptc.edu/disabilities>

### **Edmonds Community College**

Services for Students with Disabilities  
Mountlake Terrace Hall 159  
20000 – 68th Ave. W.  
Lynnwood, WA 98036  
Phone: (425) 640-1320 Voice  
Phone: (425) 774-8669 TTY  
E-mail: [ssdmail@edcc.edu](mailto:ssdmail@edcc.edu)  
Website: [www.edcc.edu/ssd](http://www.edcc.edu/ssd)

### **Everett Community College**

Center for Disabilities Services  
2000 Tower Street  
Everett, WA 98201  
Phone: (425) 388-9272 Voice  
Phone: (425) 388-9100 Voice  
Phone: (425) 388-9438 TTY  
Phone: (425) 388-9109 TTY  
E-mail: [cds@everettcc.edu](mailto:cds@everettcc.edu)  
Website: [www.everettcc.edu/resources/cds/](http://www.everettcc.edu/resources/cds/)

### **Green River Community College**

Disability Support Services  
Lindbloom Student Center, 2nd Floor, Room 271A  
12401 SE 320th Street  
Auburn, WA 98092  
Phone: (253) 833-9111 Ext. 2631 Voice  
Phone: (253) 288-3359 TTY  
Phone: (253) 288-3471 FAX  
E-mail: [DSS@greenriver.edu](mailto:DSS@greenriver.edu)  
Website: [www.greenriver.edu/DSS](http://www.greenriver.edu/DSS)

### **Highline Community College**

Deaf and Hard of Hearing Services  
Building 99, Room 150-185  
2400 South 240th Street  
Des Moines, WA 98198  
Phone: (253) 237-1106 VP  
Phone: (206) 870-4853 TTY  
Phone: (206) 878-3710 ext. 3857 Voice  
E-mail: [nallen@highline.edu](mailto:nallen@highline.edu)  
Website: <http://access.highline.edu/dhhservices.php>

### **North Seattle Community College**

Disability Support Services  
9600 College Way North  
Seattle, WA 98103  
Phone: (206) 934-3697 Voice  
Phone: (206) 934-0079 TTY  
E-mail: [ds@sccd.ctc.edu](mailto:ds@sccd.ctc.edu)  
Website: <https://northseattle.edu/disability-services>

## Topics

### **Renton Technical College**

Special Needs Office  
3000 NE 4th Street  
Renton, WA 98056  
Phone: (425) 235-2352 Voice  
Phone: (425) 235-5811 TTY  
E-mail: kforbes@RTC.edu  
Website: <http://www.rtc.edu/page/learning-resource-career-center-0>

### **Seattle Central Community College**

Disabilities Support Services  
DSS Office, BE1112 (Broadway Edison Building)  
1701 Broadway  
Seattle, WA 98122  
Phone: (206) 934-4185 Voice  
Phone: (206) 934-4183 Voice  
Phone: (206) 934-3236 Fax  
E-mail: cebrina.chavez@seattlecolleges.edu  
Website: <http://seattlecentral.edu/disability-support/index.php>

### **Shoreline Community College**

Office of Special Services  
16101 Greenwood Ave. North  
Foss Bldg., Rm 5229  
Seattle, WA 98133  
Phone: (206) 546-4545 Voice  
Phone: (206) 546-4520 TTY  
Phone: (206) 533-5109 FAX  
E-mail: [ssd@shoreline.edu](mailto:ssd@shoreline.edu)  
Website: <http://www.shoreline.edu/oss/students-with-disabilities/default.aspx>

### **South Puget Sound Community College**

Disability Support Services  
Student Life: Building 27, Second Floor  
2011 Mottman Rd SW  
Olympia, WA 98512  
Phone: (360) 596-5306 Voice  
Phone: (360) 596-5394 Voice  
Phone: (360) 569-5439 TTY  
Phone: (360) 586-4884 TTY  
Phone: (360) 754-7711 Voice  
E-mail: [dss@spscc.edu](mailto:dss@spscc.edu)  
Website: <http://www.spscc.ctc.edu/current-students/services/dss>

### **South Seattle Community College**

6000 - 16th Avenue SW  
Seattle, WA 98106  
Phone: (800) 833-6388 TTY  
Phone: (206) 934-5137 Voice  
Phone: (206) 934-6649 FAX  
E-mail: [Rose.Kolovrat@seattlecolleges.edu](mailto:Rose.Kolovrat@seattlecolleges.edu)  
Website: <http://www.southseattle.edu/disability-support/>

### **Spokane Community College Deaf and Hard of Hearing Services**

1810 North Greene Street, MS 2151  
Spokane, WA 99217  
Phone: (509) 533-8881 Voice  
Phone: (509) 533-8610 TTY  
Phone: (509) 315-2269 VP by appointment  
Phone: (509) 533-8877 FAX  
E-mail: [shillebrandt@scc.spokane.edu](mailto:shillebrandt@scc.spokane.edu)  
Website: [www.scc.spokane.edu/](http://www.scc.spokane.edu/)

### **Spokane Falls Community College**

3410 W. Fort George Wright Dr. - MS 3011  
Spokane, WA 99224-5288  
Phone: (888) 327-6914 VP  
Phone: (509) 533-4166 Voice  
Phone: (509) 533-3838 TTY  
Phone: (509) 533-3547 Fax  
E-mail: [benw@spokanefalls.edu](mailto:benw@spokanefalls.edu)  
Website: [www.spokanefalls.edu](http://www.spokanefalls.edu)

### **Tacoma Community College**

6501 S. 19th Street  
Tacoma, WA 98466  
Phone: (253) 566-5328 Voice  
Phone: (253) 566-5000 Voice  
Phone: (253) 566-5319 TTY  
E-mail: [kheld@tacomacc.edu](mailto:kheld@tacomacc.edu)  
Website: <http://www.tacomacc.edu/resourcesand-services/accessservices/>



## Topics

### **Walla Walla Community College**

Disability Support Services  
500 Tausick Way  
Walla Walla, WA 99362  
Phone: (509) 527-4543 Voice Walla Walla  
Phone: (509) 527-4412 TTY Walla Walla  
Phone: (509) 758-1718 Voice Clarkston  
E-mail: [claudia.angus@wwcc.edu](mailto:claudia.angus@wwcc.edu)  
E-mail: [carol.bennett@wwcc.edu](mailto:carol.bennett@wwcc.edu)  
Website: <http://www.wwcc.edu/CMS/index.php?id=993>

### **Wenatchee Valley Community College**

Disability Support Services  
Wenatchi Hall, Room 2133  
1300 Fifth Street  
Wenatchee, WA 98801  
Phone: (509) 682-6854 Voice  
Phone: (509) 682-6853 TTY  
Phone: (509) 682-6837 TTY  
E-mail: [cboyd@wvc.edu](mailto:cboyd@wvc.edu)  
Website: <http://www.wvc.edu/directory/departments/disability/>

### **Yakima Valley Community College**

Disability Support Services  
South 16th Ave. & Nob Hill Blvd.  
Yakima, WA 98902  
Phone: (509) 574-4960 Voice  
Phone: (509) 574-4677 TTY  
E-mail: [mcoomer@yvcc.edu](mailto:mcoomer@yvcc.edu)  
Website: <http://www.yvcc.edu/resources/dss/Pages/default.aspx>

## **Disability Support Services at Colleges & Universities**

---

### **Bellevue College**

Disability Resource Center  
3000 Landerholm Circle SE  
Bellevue, WA 98007  
Phone: (425) 564-2498 Voice  
Phone: (425) 564-4110 TTY  
E-mail: [drc@bellevuecollege.edu](mailto:drc@bellevuecollege.edu)  
Website: [www.bellevuecollege.edu/dss.asp](http://www.bellevuecollege.edu/dss.asp)

### **Evergreen State College**

Access Services for Students with Disabilities, LIB  
2153  
2700 Evergreen Parkway NW  
Olympia, WA 98505  
Phone: (360) 867-6348 Voice  
Phone: (360) 867-6834 TTY  
Phone: (360) 867-6360 FAX  
E-mail: [inocenc@evergreen.edu](mailto:inocenc@evergreen.edu)  
Website: [www.evergreen.edu/access/](http://www.evergreen.edu/access/)

### **Pierce College**

Access & Disability Services  
1601 39th Avenue S.E.  
Puyallup, WA 98374  
Phone: (253) 840-8335 Voice  
Phone: (253) 840-8474 TTY  
E-mail: [dssaccess@pierce.ctc.edu](mailto:dssaccess@pierce.ctc.edu)  
E-mail: [PuyDSSAccess@pierce.ctc.edu](mailto:PuyDSSAccess@pierce.ctc.edu)  
Website: [www.pierce.ctc.edu/dist/supportservices/ads/](http://www.pierce.ctc.edu/dist/supportservices/ads/)

### **Pierce College Fort Steilacoom**

Access & Disability Services - Welcome Center  
9401 Farwest Drive SW  
Lakewood, WA 98498-1999  
Phone: (253) 964-6468 Voice  
Phone: (253) 964-6228 TTY  
Phone: (253) 964-6449 FAX  
E-mail: [dssaccess@pierce.ctc.edu](mailto:dssaccess@pierce.ctc.edu)  
Website: [www.pierce.ctc.edu/access/contact.php](http://www.pierce.ctc.edu/access/contact.php)

### **Central Washington University**

LI Building, 400 E. University Way  
Ellensburg, WA 98926  
Phone: (509) 963-2171 Voice  
Phone: (509) 963-1218 Voice  
Phone: (509) 963-2143 TTY  
Phone: (509) 963-3235 FAX  
E-mail: [dssrecept@cwu.edu](mailto:dssrecept@cwu.edu)  
Website: [www.cwu.edu/~dss/](http://www.cwu.edu/~dss/)  
Disability Support Services  
E-mail: [dahlberc@cwu.edu](mailto:dahlberc@cwu.edu)  
Website: <http://www.cwu.edu/disability-support/>

## Topics

### **Eastern Washington University**

Disability Support Services  
124 Tawanka Hall  
Cheney, WA 99004  
Phone: (509) 359-6871 Voice  
Fax: (509) 359-7458  
E-mail: [DSS@ewu.edu](mailto:DSS@ewu.edu)  
Website: <http://access.ewu.edu/Disability-Support-Services.xml>

### **Pacific Lutheran University**

Disability Support Services  
University Center 300  
12180 Park Avenue South  
106 Ramstad Hall  
Tacoma, WA 98447  
Phone: (253) 535-7206 Voice  
Phone: (253) 531-6900 Voice  
E-mail: [tweeteri@plu.edu](mailto:tweeteri@plu.edu)  
E-mail: [dss@plu.edu](mailto:dss@plu.edu)  
Website: [www.plu.edu/dss/home.php](http://www.plu.edu/dss/home.php)

### **Seattle Pacific University**

Disability Support Services The Center for Learning  
Lower Moyer Hall  
3307 3rd Ave. W., Suite 214  
Seattle, WA 98119  
Phone: (206) 281-2272 Voice  
Phone: (206) 281-2224 TTY  
Phone: (206) 286-7348 FAX  
E-mail: [dss@spu.edu](mailto:dss@spu.edu)  
Website: [www.spu.edu/depts/cfl/dss/index.asp](http://www.spu.edu/depts/cfl/dss/index.asp)

### **Seattle University**

Disabilities Services  
901 - 12th Avenue  
Seattle, WA 98122  
Phone: (206) 296-5740 Voice  
E-mail: [bohonikc@seattleu.edu](mailto:bohonikc@seattleu.edu)  
Website: <http://www.seattleu.edu/disabilities-services/>

### **University of Washington**

UW Disability Services Office  
Suite 836, Condon Hall  
1100 NE Campus Parkway  
Seattle, WA 98195  
Phone: (206) 543-9450 Voice  
Phone: (206) 543-6452 TTY  
Phone: (206) 685-7264 FAX  
E-mail: [dso@u.washington.edu](mailto:dso@u.washington.edu)  
Website: <http://www.washington.edu/admin/dso/>

### **University of Washington - Bothell** Disability Office

Student Success Center, UW – 1, Room 170  
18115 Campus Way NE  
Bothell, WA 98011-8246  
Rosa Lundborg, M.Ed.  
Phone: (425) 352-5307  
Phone: (425) 352-5303 TTY  
Email: [rlundborg@uwb.edu](mailto:rlundborg@uwb.edu)  
Website: <http://www.uwb.edu/studentaffairs/drs>

### **University of Washington - Tacoma**

Division of Student Affairs  
1900 Commerce Street  
Tacoma, WA 98402-3100  
Phone: (253) 692-4522  
Email: [dssuwt@uw.edu](mailto:dssuwt@uw.edu)  
Website: <http://directory.tacoma.uw.edu/department/disability-support-services>

### **Washington State University – Pullman**

#### **Access Center**

217 Washington Building  
Pullman, WA 99164  
Phone: (509) 335-3417 Voice/TTY  
Phone: (509) 335-1566 Voice  
Phone: (509) 335-8511 FAX  
E-mail: [Access.Center@wsu.edu](mailto:Access.Center@wsu.edu)  
Website: <http://accesscenter.wsu.edu/accommodations/>

### **Washington State University - Spokane Campus**

600 N. Riverpoint Blvd.  
P.O. Box 1495  
Spokane, WA 99212  
Phone: (509) 358-7534 Voice  
Phone: (509) 358-7983 FAX  
E-mail: [liz.west@wsu.edu](mailto:liz.west@wsu.edu)  
Website: <http://spokane.wsu.edu/students2/student-affairs/disability-resourcess.html>



## Topics

### **Washington State University - Tri-Cities Campus**

West Building, Room 269  
2710 University Drive  
Richland, WA 99354  
Phone: (509) 372-7352 Voice  
E-mail: ctijerina@tricity.wsu.edu  
Website: <http://www.tricity.wsu.edu/disability/>

### **Washington State University - Vancouver Campus**

Student Services Center  
14204 NE Salmon Creek Avenue  
Vancouver, WA 98686  
Phone: (360) 546-9155 Voice  
Phone: (360) 546-9138 Voice  
Phone: (360) 546-9031 TTY  
E-mail: disability@vancouver.wsu.edu  
Website: <http://studentaffairs.vancouver.wsu.edu/access-center>

### **Western Oregon University**

Regional Resource Center on Deafness  
345 North Monmouth Ave.  
Monmouth, OR 97361  
Phone: (503) 838-8444 Voice  
E-mail: rrcd@wou.edu  
Website: <http://www.wou.edu/education/sped/rrcd.php>

### **Western Washington University**

DisAbility Resources for Students  
516 High Street, Old Main 120  
Bellingham, WA 98225-9019  
Phone: (360) 255-7175 VP  
Phone: (360) 650-3083 Voice  
Phone: (360) 650-3715 TTY  
E-mail: drs@wwu.edu  
Website: [www.wwu.edu/drs/](http://www.wwu.edu/drs/)  
Kim Thiessen  
Title: Deaf Services Coordinator and Accommodation Counselor  
E-mail: kim.thiessen@wwu.edu

## **Other Educational Programs**

---

### **PEPNet - Postsecondary Education Program Network**

345 N. Monmouth Ave.  
Monmouth, OR 97361  
Phone: (971) 239-0405 VP  
Phone: (503) 838-8642 Voice  
E-mail: heather.holmes@pepnet.org  
Website: [www.pepnet.org](http://www.pepnet.org)

### **The Moose Project**

4001 N. Cook  
Spokane, WA 99207  
Phone: (509) 443-5905  
E-mail: mooseproject@comcast.net  
Website: [www.mooseproject.net](http://www.mooseproject.net)

## **Emergency Management**

---

### **American Red Cross Chapters of Washington State**

Website: <http://www.redcross.org/find-your-local-chapter>

### **CS Deaf and Hard of Hearing Specialist (CS-DHRS)**

10611 Canyon Rd E, #214  
Puyallup, WA 98373  
Phone: (253) 256-3938 VP  
Phone: (253) 256-4690 Voice  
Website: [www.cs-dhhrs.com](http://www.cs-dhhrs.com)  
Christine Seymour, Emergency Education Program Educator  
E-mail: Christine@CS-DHRS.org

## Topics

### **Emergency Email Network**

Website: [www.emergencyemail.org](http://www.emergencyemail.org)

### **Washington Military Department (WMD) Emergency Management Division**

20 Aviation Drive  
Building 20, MS TA-20  
Camp Murray, WA 98430-5112  
Phone: (800) 562-6108 Voice  
Phone: (253) 512-7000 Voice  
Phone: (253) 512-7298 TTY  
Phone: (800) 688-8955 Voice  
Phone: (888) 849-2727 Voice  
Website: [www.emd.wa.gov/index.shtml](http://www.emd.wa.gov/index.shtml)

## Employment

---

### **Able Opportunities, Inc.**

36243 Hansville Rd. NE  
P.O. Box 468  
Hansville, WA 98340  
Jennifer White  
Phone: (360) 638-0881 Voice/TTY  
Phone: (206) 406-9900 Voice  
E-mail: [jennifer@ableopportunities.com](mailto:jennifer@ableopportunities.com)  
Website: [www.ableopportunities.com](http://www.ableopportunities.com)

### **Client Assistant Program (CAP)**

2531 Rainer Avenue South  
Seattle, WA 98144  
Phone: (206) 721-5999 Voice  
Phone: (800) 544-2121 Voice  
Phone: (206) 721-6072 TTY  
Phone: (888) 721-6072 TTY  
E-mail: [info@washingtoncap.org](mailto:info@washingtoncap.org)  
Website: [www.washingtoncap.org](http://www.washingtoncap.org)

### **Division of Vocational Rehabilitation (DVR)**

4565 7th Avenue SE  
Lacey, WA 98503-1044  
Phone: (360) 725-3636 Voice/TTY  
Phone: (800) 637-5627 Voice/TTY  
List of Counselors: Website: <https://www.dshs.wa.gov/jjra/division-vocational-rehabilitation/deaf-and-hard-hearing>

### **Employment Security Department (ESD)**

212 Maple Park Ave. SE  
Olympia, WA 98504  
Phone: (360) 890-3500 Voice  
E-mail: [Uitelecenters@Esd.wa.gov](mailto:Uitelecenters@Esd.wa.gov)  
Website: <http://www.esd.wa.gov/>

### **Goodwill - Work Opportunity Center - Longview**

1030 15th Avenue, Suite 300  
Longview, WA 98632  
Phone: (360) 501-8340 Voice/TTY  
E-mail: [kchilson@tacomagoodwill.org](mailto:kchilson@tacomagoodwill.org)  
E-mail: [rblasw@tacomagoodwill.org](mailto:rblasw@tacomagoodwill.org)  
Website: [www.tacomagoodwill.org](http://www.tacomagoodwill.org)

### **Governor's Committee on Disability Issues and Employment (GCDE)**

212 Maple Park Ave. SE  
Olympia, WA 98504  
Phone: 360-890-3500 Voice  
Email: [gcde@esd.wa.gov](mailto:gcde@esd.wa.gov)  
Website: [www.esd.wa.gov/newsandinformation/legresources/gcde/](http://www.esd.wa.gov/newsandinformation/legresources/gcde/)

### **Washington State Rehabilitation Council (SRC)**

PO Box 45343  
Olympia, WA 98504  
Phone: (866) 252-2939 Voice  
Phone: (360) 725-3690 Voice  
E-mail: [brounjm@dshs.wa.gov](mailto:brounjm@dshs.wa.gov)  
Website: <http://www.wastrehabcouncil.org/>

### **Washington Vocational Services – Employment Services**

22316 – 70th Ave. Suite D  
Mountlake Terrace, WA 98043  
Phone: (425) 329-3676 VP  
Phone: (425) 774-3338 Voice  
Phone: (425) 744-1555 FAX  
E-mail: [pbouwer@wvs.org](mailto:pbouwer@wvs.org)  
E-mail: [pfrisk@wvs.org](mailto:pfrisk@wvs.org)  
Website: [www.wvs.org](http://www.wvs.org)

## Topics

### **Work Opportunities - Lynnwood**

6515 - 202nd St. S.W.  
Lynnwood, WA 98036  
Phone: (425) 329-8533 VP  
Phone: (425) 778-5051 Voice  
E-mail: marysd@workopportunities.org  
E-mail: jenniferm@workopportunities.org  
Website: www.workopportunities.org

### **Work Opportunities - Mountlake Terrace**

22316 70th Ave W.  
Mountlake Terrace, WA 98043  
Phone: (425) 329-8533 VP  
Phone: (425) 778-5051 Voice  
E-mail: marysd@workopportunities.org  
Website: www.workopportunities.org

## Families and Children

---

### **Department of Early Learning (DEL) Early Support for Infants and Toddlers (ESIT) State Interagency Coordinating Council for Infants and Toddlers with Disabilities and their Families**

1110 Jefferson  
P.O. Box 40970  
Olympia, WA 98504  
Phone: (360) 725-4665 Voice  
Phone: (866) 482-4325 Voice  
Phone: (360) 725-4925 FAX  
Phone: (360) 725-3500 Voice  
E-mail: Karen.Walker@del.wa.gov  
E-mail: Linda.Jennings@del.wa.gov  
Website: www.del.wa.gov/esit  
Website: www.del.wa.gov/development/esit/councils.aspx

### **The Moose Project**

4001 N. Cook  
Spokane, WA 99207  
Phone: (509) 443-5905  
E-mail: mooseproject@comcast.net  
Website: www.mooseproject.net

### **PAVE**

6316 South 12th Street  
Tacoma, WA 98465  
Phone: (253) 565-2266 Voice  
Phone: (800) 572-7368 Voice  
Phone: (253) 566-8052 FAX  
E-mail: pave@wapave.org  
Website: www.wapave.org

### **Washington State Department of Health (DOH) Early Hearing Loss Detection, Diagnosis and Intervention Program (EHDDI)**

1610 NE 150th Street  
Shoreline, WA 98155  
Phone: (206) 418-5613 Voice  
Phone: (888) 923-4334 Voice  
Phone: (206) 418-5415 FAX  
E-mail: ehddi2@doh.wa.gov  
Website: www.doh.wa.gov/earlyhearingloss

### **Washington Sensory Disabilities Services (WSDS)**

800 Oakesdale Avenue SW  
Renton, WA 98057  
Phone: (800) 572-7000 Voice  
Phone: (425) 917-7827 Voice  
Phone: (425) 917-7838 Fax  
E-Mail: wsds@psed.org  
Website: www.wsdsonline.org

### **Washington State Hands and Voices (WSHV)**

PO Box 4022  
Bellevue, WA 98009  
Phone: (425) 268-7087 Voice  
Phone: (877) 289-2796 FAX  
E-mail: info@wahandsandvoices.org  
E-mail: join@wahandsandvoices.org  
Website: www.wahandsandvoices.org

### Hearing Aids - Financial Assistance

---

#### **Division of Vocational Rehabilitation Headquarters**

4565 7th Avenue SE  
Lacey, WA 98503-1044  
Find a DVR Office: <https://www.dshs.wa.gov/jjra/dvr/find-an-office>  
Phone: (800) 637-5627 Voice/TTY  
Website: [www.dshs.wa.gov/jjra/division-vocational-rehabilitation/deaf-and-hard-hearing](http://www.dshs.wa.gov/jjra/division-vocational-rehabilitation/deaf-and-hard-hearing)

#### **Northwest Lions Foundation for Sight and Hearing**

1200 6th Ave., Ste 300  
Seattle, WA 98101-1128  
Phone: (206) 682-8500 Voice  
Phone: (800) 847-5786 Voice  
Phone: (206) 838-4627 FAX  
E-mail: [info@nlfoundation.org](mailto:info@nlfoundation.org)  
Website: [www.nlfoundation.org](http://www.nlfoundation.org)

#### **Washington Access Fund (WAF)**

100 South King Street, Suite 280  
Seattle, WA 98104  
Phone: (206) 328-5116 Voice  
Phone: (877) 428-5116 Voice  
Phone: (888) 494-4775 TTY  
Phone: (206) 328-5126 FAX  
E-mail: [info@washingtonaccessfund.org](mailto:info@washingtonaccessfund.org)  
E-mail: [Leann@washingtonaccessfund.org](mailto:Leann@washingtonaccessfund.org)  
Website: [www.washingtonaccessfund.org](http://www.washingtonaccessfund.org)

#### **Washington Assistive Technology Act Program through Hearing, Speech, and Deafness Center; University of Washington Technology & Disability Studies**

1625 – 19th Avenue  
Seattle, WA 98122  
(888) 222-5036 Toll-free Voice  
(800) 761-2821 Toll-free TTY  
(206) 452-7953 Voice/VP  
(206) 323-5770 Voice  
(206) 388-1275 TTY  
(206) 328-6871 Fax  
E-mail: [seattle@hsrc.org](mailto:seattle@hsrc.org)  
Website: [www.hsrc.org](http://www.hsrc.org)

### Hearing Loss

---

#### **Hearing Loss Association of Washington (HLA-WA)**

4820 – 156th Place SW  
Edmonds, WA 98026-4846  
Phone: (425) 742-3228 Voice/TTY/FAX  
E-Mail: [info@hearingloss-wa.org](mailto:info@hearingloss-wa.org)  
E-mail: [chapters@hearingloss-wa.org](mailto:chapters@hearingloss-wa.org)  
Website: <http://www.hearingloss-wa.org/>  
Website: <http://www.loopseattle.org>

#### **Washington Speech-Language-Hearing Association (WSLHA)**

2150 N. 107th Street, Suite 205  
Seattle, WA 98133  
Phone: (206) 367-8704 Voice  
Phone: (206) 367-8777 FAX  
E-mail: [office@wslha.org](mailto:office@wslha.org)  
Website: [www.wslha.org](http://www.wslha.org)

### Housing

---

#### **Association of Washington Housing Authorities c/o Walla Walla Housing Authority**

501 Cayuse Street  
Walla Walla, WA 99362  
Phone: (509) 527-4611 Voice  
Website: [www.awha.org](http://www.awha.org)

#### **Common Ground - Seattle Office**

419 Occidental Avenue, Suite 201  
Seattle, WA 98104  
Phone: (206) 461-3871 FAX  
Phone: (206) 461-4500 Voice  
E-mail: [info@commongroundwa.org](mailto:info@commongroundwa.org)  
Website: <http://www.commongroundwa.org>

#### **Common Ground - Spokane Office**

720 W. Boone, Suite 101  
Spokane, WA 99201  
Phone: (509) 326-5964 FAX  
Phone: (509) 326-3678 Voice  
E-mail: [info@commongroundwa.org](mailto:info@commongroundwa.org)  
Website: [www.commongroundwa.org](http://www.commongroundwa.org)

## Topics

### **Fair Housing Center of Washington**

1517 S. Fawcett, Suite 250,  
Tacoma, Washington 98402  
Phone: (888) 766-8800 Voice/TTY  
Phone: (253) 274-9523 Voice/TTY  
Phone: (253) 274-8220 FAX  
E-mail: [info@fhcWASHINGTON.org](mailto:info@fhcWASHINGTON.org)  
Website: [www.fhcWASHINGTON.org](http://www.fhcWASHINGTON.org)

### **Housing and Urban Development in Washington**

Website: [www.hud.gov/local/index.cfm?state=wa](http://www.hud.gov/local/index.cfm?state=wa)

### **Northwest Fair Housing Alliance**

35 W. Main, Suite 250  
Spokane, WA  
Phone: (509) 325-2665 Voice  
Phone: (509) 325-2716 FAX  
Website: [www.nwfairhouse.org](http://www.nwfairhouse.org)

### **Washington State Community Action Partnerships**

Website: [www.wapartnership.org/](http://www.wapartnership.org/)

### **Washington Community Reinvestment Association**

1200 Fifth Avenue, Suite 1406  
Seattle, WA 98101  
(206) 292-2922 Voice  
(800) 788-6508 Voice  
(206) 292-0782 Fax  
E-mail: [info@wcra.net](mailto:info@wcra.net)  
Website: [www.wcra.net/](http://www.wcra.net/)

### **Washington State Housing Finance Commission**

1000 Second Avenue, Suite 2700  
Seattle WA 98104  
Phone: (206) 464-7139 Voice  
Phone: (800) 767-4663 Voice  
Phone: (206) 587-5113 FAX  
Website: <http://www.wshfc.org/index.htm>

### **Washington Low Income Housing Alliance**

1411 Fourth Ave Ste 850  
Seattle WA 98101  
Phone: (206) 442-9455 FAX  
Phone: (206) 467-4522 Voice  
Phone: (206) 623-4669 FAX  
Website: [www.wliha.org/](http://www.wliha.org/)

### **Williams Investments (Housing/Apartments)**

1020 W. Casino Road  
Everett, WA 98204  
Phone: (425) 355-0353  
Phone: (425) 876-2623  
E-mail: [apartments@williamsinvestments.vpweb.com](mailto:apartments@williamsinvestments.vpweb.com)  
Website: <http://www.williamsinvest.com/>

## **Human & Social Services**

---

### **Department of Corrections (DOC)**

7345 Linderson Way SW  
Tumwater, WA 98501-6504  
P.O. Box 41100  
Olympia, WA 98504  
Phone: (360) 725-8213 Voice/TTY  
Website: [www.doc.wa.gov](http://www.doc.wa.gov)

### **Employment Security Department (ESD)**

212 Maple Park Ave. SE  
Olympia, WA 98504  
Phone: (360) 890-3500 Voice  
Phone: (800) 833-6388 TTY  
E-mail: [work@esd.wa.gov](mailto:work@esd.wa.gov)  
Website: <http://www.esd.wa.gov>

### **Department of Health (DOH)**

P.O. Box 47890  
Olympia, WA 98504-7890  
Phone: (800) 525-0127 Voice  
Phone: (360) 360-236-4030  
Website: <http://www.doh.wa.gov/Home.aspx>

## Topics

### **Health Care Authority (HCA)**

P.O. Box 45502  
Olympia, WA 98504  
Phone: (360) 725-1040 Voice  
Phone: (800) 660-9840 Voice  
Website: <http://www.hca.wa.gov/Pages/index.aspx>

### **Department of Labor and Industries (LNI)**

7273 Linderson Way SW  
Tumwater, WA 98501-5414  
P.O. Box 44000  
Olympia, WA 98504  
Phone: (360) 902-5797 TTY  
Phone: (360) 902-5798 FAX  
Phone: (800) 547-8367 Voice  
Website: [www.lni.wa.gov](http://www.lni.wa.gov)

### **Department of Veterans Affairs (DVA)**

1102 Quince Street SE  
PO Box 41150  
Olympia, WA 98504  
Phone: (360) 725-2199 TTY  
Phone: (360) 725-2200 Voice  
Phone: (800) 562-0132 Voice  
E-mail: [heidia@dva.wa.gov](mailto:heidia@dva.wa.gov)  
Website: <http://www.dva.wa.gov/>

## Interpreting –

---

### **Independent Contractors and Interpreting Referral Agencies**

For an updated listing, please check the ODHH website: <http://www.dshs.wa.gov/altsa/odhh/contractor-wa-state>

#### INDEPENDENT CONTRACTORS

#### **Agy, Roma**

Olympia, WA  
Phone: (360) 480-6482  
E-mail: [roma.agny@outlook.com](mailto:roma.agny@outlook.com)

#### **Andrews, Roxie**

University Place, WA  
Phone: (253) 861-5251 Voice  
E-mail: [jandrews16@juno.com](mailto:jandrews16@juno.com)

#### **Bazinet, Paula**

Kennewick, WA  
Phone: (509) 851-8848  
E-mail: [paulabazinet@gmail.com](mailto:paulabazinet@gmail.com)  
E-mail: [paulabazinet@yahoo.com](mailto:paulabazinet@yahoo.com)

#### **Boivin, Johnne**

Tenino, WA  
Phone: (360) 704-8140  
Phone: (360) 539-8829  
E-mail: [angelhandsinterpreting@gmail.com](mailto:angelhandsinterpreting@gmail.com)

#### **Boote, Alyson**

Seattle, WA  
Phone: (206) 883-8127  
E-mail: [alysonboote@gmail.com](mailto:alysonboote@gmail.com)

#### **Bunze, Katherine**

Spokane, WA  
Phone: (509) 475-5597  
E-mail: [katherinebunze@msn.com](mailto:katherinebunze@msn.com)  
E-mail: [Kathybunze@gmail.com](mailto:Kathybunze@gmail.com)

#### **Kosanovich, Jane**

Olympia, WA  
Phone: (253) 759-0696  
Phone: (206) 203-4247 FAX  
E-mail: [janeterps@gmail.com](mailto:janeterps@gmail.com)

#### **Kosanovich, Michael**

Olympia, WA  
Phone: (253) 686-6657 Voice  
Phone: (206) 203-4247 FAX  
E-mail: [aslmichaelterp@net-venture.com](mailto:aslmichaelterp@net-venture.com)  
E-mail: [mekosanovich@gmail.com](mailto:mekosanovich@gmail.com)

#### **MacLean, Polly**

Lakewood, WA  
Phone: (253) 381-3547  
E-mail: [2pollym@gmail.com](mailto:2pollym@gmail.com)  
E-mail: [polly.mac@comcast.net](mailto:polly.mac@comcast.net)

#### **Siegel, Verna**

ASL Interpreting Services  
Centralia, WA  
Phone: (360) 280-8112  
Phone: (360) 736-6742 FAX  
E-mail: [verna.siegel@gmail.com](mailto:verna.siegel@gmail.com)



## Topics

### INTERPRETER REFERRAL AGENCIES

#### **All Hands Community Interpreting Services**

P.O. Box 458  
Orting, WA 98360  
Phone: (360) 897-8300  
Phone: (888) 704-8309  
Phone: (360) 897-8302 FAX  
E-mail: allhandscis@centurytel.net  
E-mail: rena.allhandscis@centurytel.net  
Website: www.allhandscis.com

#### **ASL Interpreter Network**

PO Box 17414  
Seattle, WA 98909  
Phone: (253) 759-7653  
Phone: (509) 895-7136 FAX  
E-mail: aslprofessionals@comcast.net

#### **ASL Professionals**

PO Box 10324  
Yakima, WA 98127  
Phone: (206) 527-9555  
Phone: (206) 527-9557 FAX  
E-mail: manager@aslnetwork.com  
Website: www.aslnetwork.com

#### **Away with Words Interpreter Services, LLC**

PO Box 1074  
Chewelah, WA 99109  
Phone: (509) 935-6224  
E-mail: awaywithwordsasl@gmail.com  
Website: www.awaywithwordsasl.com

#### **CODAs Plus**

800 NE Tenney Rd, Suite #110, PMB 433  
Vancouver, WA 98685  
Phone: (360) 947-5100  
E-mail: codasplus@comcast.net  
Website: www.codasplus.com

#### **Columbia Language Services**

9301 NE Fourth Plain Road  
Vancouver, WA 98662  
Phone: (360) 896-3881  
Phone: (888) 202-3301  
E-mail: info@columbia-language.com  
Website: https://columbia-language.com/

#### **Cross Cultural Communications**

PO Box 2166  
Sumner, WA 98390  
Phone: (253) 447-2000  
Phone: (253) 447-2041 FAX  
E-mail: michael.jordan@crossculturalcom.us  
Website: http://cccinterpreting.com/

#### **HandDancer Interpreter Services**

5320 Nielsen Ave.  
Ferndale, WA 98248  
Phone: (360) 383-2293  
Phone: (360) 739-3878  
Phone: (360) 383-2274 FAX  
E-mail: hnddncr@aol.com  
Website: http://handdancerinterpreters.com/

#### **NEXUS**

1206 N. Howard Street  
Spokane, WA 99201  
Phone: (509) 328-9220  
Phone: (509) 327-4622 FAX  
E-mail: director@nexus.INW.com  
E-mail: info@nexusINW.com  
E-mail: IS@nexusINW.com  
Website: http://www.nexusinw.com/

#### **SignOn**

**Hearing, Speech & Deafness Center (HSDC),**  
1625 - 19th Ave.  
Seattle, WA 98122  
Phone: (206) 632-7100  
Phone: (206) 632-0405 FAX  
E-mail: signon@hscd.org  
Website: www.signonasl.com  
Website: www.hscd.org

#### **South Eastern Washington Service Center of the Deaf and Hard of Hearing - (SEWSCDHH) - Pasco**

124 N 5th Ave  
Pasco, WA 99301  
Phone: (509) 543-9644  
Phone: (509) 205-2284  
Phone: (509) 416-2221 VP  
E-mail: interpretingsewscdhh@safe-mail.net  
E-mail: chandler@sewscdhh.org  
Website: www.sewscdhh.org

## Topics

### **Strada Communication, Inc.**

605 Main Street #4727  
Vancouver, WA 98660  
Phone: (360) 573-5464  
E-mail: [scheduling@stradagize.com](mailto:scheduling@stradagize.com)  
Website: <http://stradagize.com/>

### **Universal Language Service, Inc.**

P.O. Box 4147  
Bellevue, WA 98009  
Phone: (425) 454-8074  
Phone: (888) 462-0500  
Phone: (877) 516-4347 FAX  
E-mail: [Scheduling@ULSonLine.net](mailto:Scheduling@ULSonLine.net)  
Website: [www.ULSonline.net](http://www.ULSonline.net)

### **Washington State Registry of Interpreters for the Deaf**

PO Box 20334  
Seattle, WA 98102  
Phone: (206) 781-2109 Voice  
E-mail: [wsrid@wsrid.com](mailto:wsrid@wsrid.com)  
Website: [www.wsrid.com/](http://www.wsrid.com/)

## Interpreter Training Programs

### **Spokane Falls Community College**

3410 W. Fort George Wright Dr. - MS 3190  
Spokane, WA 99224-5288  
Phone: (509) 533-3730 Voice  
Phone: (509) 533-3618 Voice  
E-mail: [corrine.morrow@spokanefalls.edu](mailto:corrine.morrow@spokanefalls.edu)  
E-mail: [marie.rendon@spokanefalls.edu](mailto:marie.rendon@spokanefalls.edu)  
Website: <http://www.spokanefalls.edu/TechProf/HumanServices/Interpreter.aspx>

### **Western Oregon University**

ASL/English Interpreting Program  
Regional Resource Center on Deafness  
345 North Monmouth Ave.  
Monmouth, OR 97361  
Phone: (503) 838-8444 Voice/TTY  
Phone: (503) 838-8228 FAX  
E-mail: [interpretingprogram@wou.edu](mailto:interpretingprogram@wou.edu)  
Website: <http://www.wou.edu/education/sped/bsbai.php>

## Legal

### **City of Bellingham ADA Coordinator**

210 Lottie Street  
Bellingham, WA 98225  
Phone: (360) 778-8382 TTY  
Phone: (360) 778-7901 FAX  
Phone: (360) 778-7900 Voice  
Email: [pw@cob.org](mailto:pw@cob.org)  
Website: <http://www.cob.org/government/access/ada-accomodations-request.aspx>

### **Client Assistant Program (CAP)**

2531 Rainer Avenue South  
Seattle, WA 98144  
Phone: (206) 721-5999 Voice  
Phone: (800) 544-2121 Voice  
Phone: (206) 721-6072 TTY  
Phone: (888) 721-6072 TTY  
E-mail: [info@washingtoncap.org](mailto:info@washingtoncap.org)  
Website: [www.washingtoncap.org](http://www.washingtoncap.org)

### **Disability Rights Washington**

315 – 5th Avenue South, Suite 850  
Seattle, WA 98104  
Phone: (206) 324-1521 Voice  
Phone: (800) 562-2702 Voice  
Phone: (206) 957-0728 TTY  
Phone: (800) 905-0209 TTY  
Phone: (206) 957-0729 FAX  
E-mail: [info@dr-wa.org](mailto:info@dr-wa.org)  
Website: [www.disabilityrightswa.org](http://www.disabilityrightswa.org)

### **King County Bar Association**

1200 Fifth Avenue Suite 600  
Seattle, WA 98101  
Phone: (206) 267-7099 FAX  
Phone: (206) 267-7100 Voice  
Website: [www.kcba.org](http://www.kcba.org)

### **King County Office of Civil Rights & Open Government**

401 Fifth Ave., Suite 215  
Seattle, WA 98104  
Phone: (206) 263-2446  
E-mail: [Civil-Rights.OCR@kingcounty.gov](mailto:Civil-Rights.OCR@kingcounty.gov)  
Website: [www.kingcounty.gov/exec/civilrights.aspx](http://www.kingcounty.gov/exec/civilrights.aspx)



## Topics

### **Law Office of Michael J. Izak, PLLC**

P.O. Box 58605  
Renton, WA 98058  
Phone: (253) 638-1433 TTY  
Phone: (253) 234-1577 Voice  
Phone: (253) 630-1375 FAX  
Michael Izak, Attorney  
E-mail: [surdus.law@gmail.com](mailto:surdus.law@gmail.com)

### **Northwest ADA Center**

University of Washington  
6912 220th St S.W., Suite 105  
Mountlake Terrace, WA 98043  
Phone: (800) 949-4232 Voice  
Phone: (425) 233-8913 VP  
E-mail: [nwadactr@uw.edu](mailto:nwadactr@uw.edu)  
Website: [www.nwadacenter.org](http://www.nwadacenter.org)

### **Northwest Justice Project**

401 Second Avenue, Suite 407  
Seattle, WA 98118  
Phone: (206) 464-1519 Voice/FAX  
Phone: (888) 201-1014 Voice  
Phone: (888) 201-9736 FAX  
Website: <http://nwjustice.org/>

### **Office of Education Ombudsman (OEO)**

Northgate Executive Center 1, Bldg. B  
155 NE 100th Street, Suite 210  
Seattle, WA 98125-8012  
Phone: (866) 297-2597 Voice  
E-mail: [OEOinfo@gov.wa.gov](mailto:OEOinfo@gov.wa.gov)  
Website: <http://www.governor.wa.gov/oeo/>

### **Seattle Office for Civil Rights**

#### **Office for Civil Rights , Central Building**

810 3rd Avenue Suite 750  
Seattle, WA 98104-1627  
Phone: (206) 684-4500 Voice  
Phone: (206) 684-4503 TTY  
Phone: (206) 684-0332 FAX  
Website: [www.seattle.gov/civilrights/](http://www.seattle.gov/civilrights/)

### **Tacoma Human Rights and Human Services Department**

747 Market Street, Room 836  
Tacoma, WA 98402  
Phone: (253) 591-5151 Voice  
Phone: (253) 591-5153 TTY  
E-mail: [hrhs@cityoftacoma.org](mailto:hrhs@cityoftacoma.org)  
Website: [www.cityoftacoma.org/Page.aspx?nid=144](http://www.cityoftacoma.org/Page.aspx?nid=144)

### **U.S. Department of Justice United State Attorney's Office**

#### **Western District of Washington Seattle**

United State Attorney's Office  
700 Steward Street, Suite 5220  
Seattle, WA 98101  
Phone: (800) 797-6722 Voice  
Phone: (206) 553-7970 Voice  
Phone: (206) 553-0882 Fax  
Website: <http://www.justice.gov/usao-wdwa/contact-us>

#### **Tacoma**

United State Attorney's Office  
1201 Pacific Avenue, Suite 700  
Tacoma, WA 98402  
Phone: (253) 428-3800 Voice  
Phone: (253) 428-3826 Fax  
Website: <http://www.justice.gov/usao-wdwa/contact-us>

#### **Eastern District of Washington Spokane**

United State Attorney's Office  
PO Box 1494  
Spokane, WA 99210-1494  
Phone: (509) 353-2767 Voice  
Phone: (509) 835-6397 Fax  
Website: <http://www.justice.gov/usao/district/edwa>

## Topics

### **Yakima**

United State Attorney's Office  
402 E. Yakima Ave., Suite 210  
Yakima, WA 98901  
Phone: (509) 454-4425 Voice  
Phone: (509) 249-3297 Fax  
Website: <http://www.justice.gov/usao/district/edwa>

### **U.S. Equal Employment Opportunity Commission**

909 1st Avenue, Suite 400  
Seattle, WA 98104  
Phone: (206) 220-6882 TTY  
Phone: (206) 220-6882 TTY  
Phone: (800) 669-4000 Voice  
Website: <http://www.eeoc.gov>

### **Washington Communication Access Project (WASH-CAP)**

425 Chuckanut Drive N. #9  
Bellington, WA 98229  
Phone: (360) 738-3756 Voice  
E-mail: [charlenemackenzie@comcast.net](mailto:charlenemackenzie@comcast.net) or  
E-mail: [bertleederer@msn.com](mailto:bertleederer@msn.com)  
Website: [www.wash-cap.com](http://www.wash-cap.com)

### **Washington State Bar Association**

1325 Fourth Ave. Suite 600  
Seattle, WA 98101  
Phone: (206) 443-9722 Voice  
Phone: (800) 945-9722 Voice  
Phone: (206) 727-8319 FAX  
E-mail: [questions@wsba.org](mailto:questions@wsba.org)  
Website: [www.wsba.org](http://www.wsba.org)

### **Washington State Human Rights Commission - Olympia Office**

711 S. Capitol Way, Suite 402  
Olympia, WA 98504  
Phone: (800) 300-7525 TTY  
Phone: (800) 233-3247 Voice  
Phone: (360) 586-2282 FAX  
<http://www.hum.wa.gov>

### **Washington State Human Rights Commission - Spokane Office**

Great Western Building  
W 905 Riverside Avenue, Suite 416  
Spokane, WA 99201  
Phone: (509) 456-4441 FAX  
Phone: (509) 456-4473 Voice  
Website: <http://www.hum.wa.gov>

### **Washington State Human Rights Commission - Yakima Office**

32 N. 3Rd, Suite 422  
Yakima, WA 98901  
Phone: (509) 575-2064 FAX  
Phone: (800) 662-2755 Voice  
Website: [www.hum.wa.gov](http://www.hum.wa.gov)

## Mental Health

---

### **Abused Deaf Women's Advocacy Services (ADWAS)**

Dov Wills, LMHC, Therapist  
8623 Roosevelt Way NE  
Seattle, WA 98115  
Phone: Direct line: 206-512-8528 VP  
Phone: (206) 922-7088  
Phone: (206) 726-0017 FAX  
Website: [www.adwas.org](http://www.adwas.org)

### **Anne B Norton, Psy S, LPC LMHCA**

Mental Health Counseling and Coaching provided via Computer, Face-to-Face  
Phone: (907) 315-3985  
E-mail: [annebnorton@gmail.com](mailto:annebnorton@gmail.com)  
Website: [www.pediatricpsych-alaska.com](http://www.pediatricpsych-alaska.com)

### **Beth Hirnle, NCC, LMHC**

Private Practice  
10827 NE 68th St. Suite E  
Kirkland, WA 98033  
Phone: (425) 443-9893 Voice  
Phone: (425) 307-6540 FAX  
E-mail: [BethHirnle@msn.com](mailto:BethHirnle@msn.com)

## Topics

### **Central Washington Comprehensive Mental Health - Yakima County Behavioral Healthcare**

402 South Fourth Avenue  
Yakima, WA 98902  
Phone: (509) 573-3642 Voice  
Phone: (888) 828-2962 Voice  
Phone: (509) 576-4331 TTY  
Website: [www.cwcmh.org](http://www.cwcmh.org)

### **Columbia River Mental Health Services – Clark County**

6926 NE Fourth Plain Blvd  
Vancouver, WA 98661  
Phone: (360) 993-3000 Voice  
Phone: (360) 993-3001 TTY  
Phone: (360) 993-3047 FAX  
E-mail: [info@crmhs.org](mailto:info@crmhs.org)  
Website: [www.crmhs.org](http://www.crmhs.org)

### **Deaf Access Washington – Yakima County**

409 North 57th Avenue  
Yakima, WA 98908-2715  
P.O. Box 30  
Yakima, WA 98907-0030  
Phone: (509) 728-9014 VP  
Phone: (509) 452-9823 Voice  
Phone: (509) 930-2012 Voice  
Phone: (509) 966-9799 FAX  
E-mail: [garym@dawash.org](mailto:garym@dawash.org)  
Website: [www.dawash.org](http://www.dawash.org)

### **Debbie Lasky-Fink, MA, LMHC, MA Mental Health Counseling**

20056 - 19th Ave. NE, Suite 104A  
Shoreline, WA 98155  
Phone: (425) 308-3693 Voice  
E-mail: [laskyfinkd@yahoo.com](mailto:laskyfinkd@yahoo.com)  
Website: <http://debbielasky-fink.com/>

### **Dov Wills, LMHC**

Private Practice: Fridays only  
444 NE Ravenna  
Seattle, WA  
Phone: (206) 459-2879 V/TEXT  
Phone: (206) 452-7981 VP  
E-mail: [dov.wills@gmail.com](mailto:dov.wills@gmail.com)  
Website: <https://therapists.psychologytoday.com/232452>

### **Jacqui Metzger, LICSW**

Private Practice  
2271 NE 51st Street  
Seattle, WA 98105  
Phone: (206) 522-8553 ext 228  
Email: [jacquimetzger@gmail.com](mailto:jacquimetzger@gmail.com)

### **Melick Psychological Services, Amy Melick, Ph.D.**

Private Practice  
17220 - 127th Pl. NE, #300  
Woodinville, WA 98072  
Phone: (425) 985-5236 Voice/TTY  
E-mail: [drmelick@comcast.net](mailto:drmelick@comcast.net)

### **Melissa Wood Brewster, LICSW**

Private Practice  
753 N. 35th Street, Suite 102  
Seattle, WA 98103  
Phone: (206) 409-1266 Voice  
E-mail: [woodbrewster@gmail.com](mailto:woodbrewster@gmail.com)  
Website: [www.woodbrewster.com](http://www.woodbrewster.com)

### **North Sound Mental Health Administration – Island, San Juan, Skagit, Snohomish & Whatcom Counties**

117 North First Street, Suite 8  
Mount Vernon, WA 98273  
Phone: (360) 416-7013 Voice  
Phone: (800) 833-6384 TTY  
Phone: (360) 416-7017 FAX  
E-mail: [margaret-rojes@nsmha.org](mailto:margaret-rojes@nsmha.org)  
Website: [www.nsmha.org](http://www.nsmha.org)

### **Salveo Counseling Center - Megan Erasmus**

16150 NE 85th Street, Suite 120  
Redmond, WA 98052  
Phone: (425) 868-5777 Voice  
E-mail: [info@salveocounseling.com](mailto:info@salveocounseling.com)  
Website: [www.salveocounseling.com](http://www.salveocounseling.com)  
Website: <http://www.salveocounseling.com/#!/megan-erasmus--therapist-in-redmond-wa/crnz>

## Topics

### **Seattle Children's Hospital – King County Department of Psychiatry, Deaf/Hard of Hearing Services**

4800 Sand Point Way NE, W3636  
Seattle, WA 98026  
PO Box 5371

Seattle, WA 98105

Phone: (206) 987-2164 Voice

Phone: (206) 987-4885 Voice

Phone: (206) 526-2551 TTY

Phone: (206) 987-2246 FAX

E-mail: erika.miller@seattlechildrens.org

E-mail: psychintake@seattlechildrens.org

Website: www.seattlechildrens.org

### **Seattle Counseling Services**

1216 Pine Street, Suite 300

Seattle, WA 98101

Phone: (206) 323-1768 Voice/TTY

Phone: (206) 323-2184 FAX

E-mail: info@seattlecounseling.org

Website: www.seattlecounseling.org

### **Sheryl E. Kool, MA, LMHC**

Private Practice

13019 42nd Ave NE

Seattle, WA 98125

Phone: (206) 595-4017

E-mail: sheryl@thekools.org

Website: www.sherylkool.com

### **Sound Mental Health**

#### **Anne Baldwin, M.A., LMHC,**

Deaf Services Program Manager

600 Broadway Suite 170

Seattle, WA 98122

Phone: (206) 455-7929 VP

Phone: (206) 302-2811 Voice

Phone: (206) 302-2600 Voice

Phone: (206) 302-2610 FAX

Email: DeafServices@smh.org

Email: anneb@smh.org

Website: www.smh.org/deaf-services

### **Wendy B. Marlowe, Ph.D., ABPP, Clinical Neuropsychologist**

Private Practice

2150 N. 107th Street, Suite 250

Seattle, WA 98133

Phone: (206) 623-5217 Voice/TTY

Phone: (206) 623-2337 FAX

E-mail: wbmardlowe@comcast.net

Website: www.wendymarloweph.d.com

### **Wilson Clinical Services, PLLC.**

#### **Dr. Jaime A.B. Wilson, Ph.D.**

Private Practice

1117 A Street

Tacoma, WA 98402

E-mail: wilson.clinical@gmail.com

Website: www.wilsonclinical.com

## Other - Businesses

---

### **deaffriendly.com**

Phone: (206) 397-8631 VP

E-mail: info@deaffriendly.com

Website: www.deaffriendly.com

### **Farmers Insurance** Auto, Home and Life Insurance

Bryan Branson, Agent

3021 S. Regal, Suite 102

Spokane, WA 99223

Phone: (509) 315-2284 VP

Phone: (509) 535-4785 FAX

Phone: (509) 232-7367 TTY

E-mail: blbranson1@msn.com

### **Origami OWI Custom Jewelry**

7711 Rainer Drive

Everett, WA 98203

Phone: (425) 442-4876 TEXT

E-mail: angelmobileg1@gmail.com

Website: www.angelcole.origamiowl.com

### **Turtle Heart Coaching & Retreats**

3515 NE 43rd Street

Vancouver, WA 98661

Phone: (510) 344-5571 VP

E-mail: LaRondaZupp@gmail.com

Website: www.turtleheartretreats.com

## Topics

### **Yakima Valley Hearing and Speech Center**

303 South 12th Avenue  
Yakima, WA 98902  
Phone: (509) 453-8248  
Phone: (509) 248-9012 FAX  
E-mail: nancy1@hearingandspeechcenter.com

### **Windermere Real Estate**

3900 E Valley Rd, Suite 200  
Renton, WA 98057  
Phone: (253) 632-3099  
Phone: (425) 277-5900 Voice  
E-mail: bethc@windermere.com  
Website: <http://bethc.withwre.com/>

## Recreation

---

### **Deaf Spotlight**

PO Box 20191  
Seattle, WA 98102  
E-mail: deafspotlight@gmail.com  
Website: [www.deafspotlight.com](http://www.deafspotlight.com)

### **Metro Parks Tacoma**

3873 S. 66th Street  
Tacoma, WA 98409  
Phone: (253) 759-9286 TTY  
Phone: (253) 404-3951 Voice  
E-mail: kdoty@tacomaparks.com  
Website: [www.metroparkstacoma.org](http://www.metroparkstacoma.org)

### **Seattle Parks and Recreation - Specialized Programs**

100 Dexter Avenue North  
Seattle, WA 98109  
Phone: (206) 684-4950 Voice  
Website: [www.seattle.gov/parks/SpecialPops/index.htm](http://www.seattle.gov/parks/SpecialPops/index.htm)

### **Washington State Accessible Outdoor Recreation Guide**

1111 Israel Road S.W.  
Olympia, WA 98504-2650  
Phone: (360) 902-8659 Voice  
E-mail: [ada@parks.wa.gov](mailto:ada@parks.wa.gov)  
Website: <http://www.parks.wa.gov/ada-rec/>

### **Washington State Arts Commission (WSAC)**

PO Box 42675  
Olympia, WA 98504-2675  
Phone: (360) 753-3860 Voice  
Phone: (360) 586-5351 FAX  
E-mail: [info@arts.wa.gov](mailto:info@arts.wa.gov)  
Website: [www.arts.wa.gov](http://www.arts.wa.gov)

### **Washington State Department of Fish and Wildlife (DFW)**

1111 Washington St. SE  
Olympia, WA 98501  
Phone: (360) 902-2200 Voice  
Website: [www.wdfw.wa.gov](http://www.wdfw.wa.gov)

### **Washington State Department of Natural Resources (DNR)**

1111 Washington Street SE  
Olympia, WA 98504-7000  
Phone: (360) 902-1000 Voice  
Website: [www.dnr.wa.gov](http://www.dnr.wa.gov)

### **Washington State Parks and Recreation Commission**

Disability Pass Program  
P.O. Box 42650  
Olympia, WA 98504  
Phone: (360) 664-3133 TTY  
Phone: (360) 902-8500 Voice  
Phone: (888) 226-7688 Voice  
Phone: (360) 902-8844 Voice  
Website: [www.parks.wa.gov](http://www.parks.wa.gov)

## Senior Citizens / Aging

---

### **Aging and Long-Term Support Administration (AL TSA)**

Blake Office Park West 4450 - 10th Ave. SE  
Lacey, WA 98503  
Phone: (800) 422-3263 Voice  
Phone: (800) 422-7930 TTY  
Phone: (360) 493-2637 TTY - Regional Office  
Website: [www.dshs.wa.gov/altsa](http://www.dshs.wa.gov/altsa)

## Topics

### **Washington State Deaf Senior Citizens (WSDSC)**

PO Box 145  
Lynden, WA 98264  
Phone: (360) 707-7597 VP  
E-mail: ellenscheppach@yahoo.com  
E-Mail: vanscheppach@yahoo.com

Anacortes, WA 98221  
PO Box 699  
Anacortes, WA 98221  
Phone: (360) 293-5609 Voice  
E-mail: info@summitdogs.org  
Website: www.summitdogs.org

## Service Animals

---

### **Department of Corrections Washington Corrections Center for Women Prison Pet Partnership Program (PPPP)**

9601 Bujacich Rd. NW  
Gig Harbor, WA 98332  
Phone: (253) 858-4240 Voice  
Phone: (253) 858-4202 FAX  
E-mail: info@prisonpetpartnership.org  
Website: www.prisonpetpartnership.org

### **Dogs for the Deaf, Inc.**

10175 Wheeler Road  
Central Point, OR 97502  
Phone: (541) 826-9220 Voice/TTY  
Phone: (541) 826-6696 FAX  
E-mail: info@dogsforthe deaf.org  
E-mail: Robin@dogsforthe deaf.org  
Website: www.dogsforthe deaf.org

### **International Hearing Dog, Inc.**

5901 E. 89th Ave.  
Henderson, CO 80640  
Phone: (267) 963-7153  
E-mail: INFO@hearingdog.org  
Website: www.hearingdog.org

### **Pet Partners (formerly Delta Society National Service Dog Center)**

875 - 124th Avenue NE #101  
Bellevue, WA 98005  
Phone: (425) 679-5500 Voice  
E-mail: info@petpartners.org  
Website: www.petpartners.org

### **Summit Assistance Dogs**

12549 Christianson Rd.

## Sign Language

---

### **Washington American Sign Language Teachers Association (WA-ASLTA)**

Website: <http://wa-aslta.org/index.html>

Colleges, universities and private classes listed below may provide sign language classes depending on the number of student enrollments. Please contact school or other classes for further information

## Sign Language Classes at Community and Technical Colleges

---

### **Cascadia Community College**

18345 Campus Way NE  
Bothell, WA 98011  
Phone: (425) 352-8000 Voice  
Website: <http://www.cascadia.edu/Default.aspx>

### **Edmonds Community College**

20000 - 68th Ave. West  
Lynwood, WA 98036  
Phone: (425) 640-1459 Voice  
Website: <http://www.edcc.edu/priorlearning/course-descriptions/asl-course-descriptions.html>

### **Everett Community College**

2000 Tower Street  
Everett, WA 98201  
Phone: (425) 388-9272 Voice  
Phone: (425) 388-9100 Voice  
Phone: (425) 388-9438 TTY  
Phone: (425) 388-9109 TTY  
E-mail: cds@everettcc.edu  
Website: [www.everettcc.edu/resources/cds/](http://www.everettcc.edu/resources/cds/)



## Topics

### **Green River Community College**

12401 SE 320th Street  
Auburn, WA 98092  
Phone: (253) 833-9111 Voice  
Website: [www.greenriver.edu](http://www.greenriver.edu)

### **Highline Community College**

2400 South 240th Street  
Des Moines, WA 98198  
Phone: (206) 878-3710 Voice  
Website: [www.highline.edu](http://www.highline.edu)

### **Olympic Community College**

1600 Chester Avenue  
Bremerton, WA 98337  
Phone: (360) 362-7054 VP  
Phone: (360) 475-7543 TTY  
Phone: (800) 259-6718 Voice  
Phone: (360) 475-7540 Voice  
Phone: (360) 475-7436 FAX  
E-mail: [melliott@oc.ctc.edu](mailto:melliott@oc.ctc.edu)  
Website: [www.oc.ctc.edu](http://www.oc.ctc.edu)

### **Renton Technical College**

3000 NE 4th Street  
Renton, WA 98056  
Phone: (425) 235-2352 Voice  
Website: [www.rtc.edu](http://www.rtc.edu)

### **Seattle Central Community College**

1701 Broadway  
Seattle, WA 98122  
Phone: (206) 344-4347 Voice  
Phone: (206) 587-6337 FAX  
Phone: (206) 587-3800 Voice  
Website: [www.seattlecentral.edu](http://www.seattlecentral.edu)

### **Shoreline Community College**

16101 Greenwood Ave. North  
Seattle, WA 98133  
Phone: (206) 546-4101 Voice  
Phone: (206) 546-4520 TTY  
Business/Intra-Americans Studies Social/Science  
Phone: (206) 546-4540  
ASL Program  
Phone: (206) 546-4647 TTY  
Website: [www.shoreline.edu](http://www.shoreline.edu)

### **South Puget Sound Community College**

2011 Mottman Rd SW  
Olympia, WA 98512  
Phone: (360) 339-7375 VP  
E-mail: [rbateh@spscc.ctc.edu](mailto:rbateh@spscc.ctc.edu)  
Website: [www.spscc.ctc.edu](http://www.spscc.ctc.edu)  
South Seattle Community College  
6000 - 16th Avenue SW  
Seattle, WA 98106  
Phone: (800) 833-6388 TTY  
Phone: (206) 934-5300 Voice  
Website: [www.southseattle.edu](http://www.southseattle.edu)

### **Spokane Community College**

1810 North Greene Street  
Spokane, WA 99217  
Phone: (509) 533-7000 Voice  
Phone: (509) 533-7482 TTY  
Institute for Extended Learning  
Phone: (509) 279-6000 Voice  
Website: [www.scc.spokane.edu/](http://www.scc.spokane.edu/)

### **Spokane Falls Community College**

3410 W. Fort George Wright Dr. - MS 3011  
Spokane, WA 99224-5288  
Phone: (509) 533-3500 Voice  
Phone: (888) 509-7944 Voice  
Website: [www.spokanefalls.edu](http://www.spokanefalls.edu)

### **Whatcom Community College**

237 West Kellogg Road  
Bellingham, WA 98226  
Phone: (360) 676-2170 Voice  
Phone: (360) 647-3279 TTY  
Website: [www.whatcomcommunityed.com](http://www.whatcomcommunityed.com)

### **Yakima Valley Community College**

P.O. Box 22520  
Yakima, WA 98907-2520  
Phone: (509) 574-4600 Voice  
Phone: (509) 574-4600 TTY  
Website: [www.yvcc.edu](http://www.yvcc.edu)

### **Walla Walla Community College**

500 Tausick Way  
Walla Walla, WA 99362  
Phone: (509) 522-2500 Voice  
Website: <http://www.wvcc.edu/CMS/>

### Sign Language Classes at Colleges

---

#### **Bellevue College**

3000 Landerholm Circle SE  
Bellevue, WA 98007  
Phone: (425) 564-2498 Voice  
Phone: (425) 564-4110 TTY  
Phone: (425) 564-2289 Voice  
Website: <http://bellevuecollege.edu/classes/Search?q=quarter=Fall2012&searchterm=American+Sign+Language&submit=Search>

#### **Centralia College**

600 Centralia College Blvd  
Centralia, WA 98531  
Phone: (360) 736-9391 Voice  
Phone: (360) 753-3433  
Phone: (360) 807-6227 TTY  
Website: <http://www.centralia.edu/>

#### **Clark College**

1933 Fort Vancouver Way  
Vancouver, WA 98663  
Phone: (360) 699-6398 Voice  
Website: [www.clark.edu](http://www.clark.edu)

#### **Grays Harbor College**

1620 Edward P. Smith Drive  
Aberdeen, WA 98520  
Phone: (360) 532-9020 Voice  
Phone: (360) 538-4223 TTY  
Website: [www.ghc.ctc.edu](http://www.ghc.ctc.edu)

#### **Pierce College**

1601 39th Avenue. S.E.  
Puyallup, WA 98374  
Phone: (253) 840-8400 Voice  
Phone: (253) 840-8321 FAX  
E-mail: [dssaccess@pierce.ctc.edu](mailto:dssaccess@pierce.ctc.edu)  
E-mail: [jstarr@pierce.ctc.edu](mailto:jstarr@pierce.ctc.edu)  
Website: [www.pierce.ctc.edu](http://www.pierce.ctc.edu)

#### **Skagit Valley College, Mount Vernon Campus**

2405 East College Way  
Mount Vernon, WA 98273  
Phone: (360) 416-7600 Voice  
Website: [www.skagit.edu](http://www.skagit.edu)

#### **Skagit Valley College - Whidbey Island Campus**

1900 SE Pioneer Way  
Oak Harbor, WA 98277  
Phone: (360) 675-6656 Voice  
Website: [www.skagit.edu](http://www.skagit.edu)

#### **Wenatchee Valley College**

1300 Fifth Street  
Wenatchee, WA 98801  
Phone: (509) 682-6800 Voice  
Phone: (509) 682-6837 TTY  
Website: [www.wvc.edu](http://www.wvc.edu)

### Sign Language Classes at Universities

---

#### **Central Washington University**

LI Building  
400 E. University Way  
Ellensburg, WA 98926  
Phone: (509) 963-1218 Voice  
Website: [www.cwu.edu](http://www.cwu.edu)

#### **Eastern Washington University**

526 5th Street  
Cheney, WA 99004  
Phone: (509) 359-6200 Voice  
Registrar's Office  
Phone: (509) 359-2321 Voice  
Website: [www.ewu.edu](http://www.ewu.edu)

#### **Evergreen State College**

2700 Evergreen Parkway NW  
Olympia, WA 98505  
Phone: (360) 867-6000 Voice  
Website: [www.evergreen.edu](http://www.evergreen.edu)



## Topics

### **Heritage University**

3240 Fort Road  
Toppenish, WA 99004  
Phone: (888) 272-6190 Voice  
Registrar's Office (509) 865-8509  
Email: registrar@heritage.edu  
Website: <http://www.heritage.edu/CampusLocations/Toppenish.aspx>

### **Pacific Lutheran University**

12180 Park Avenue South  
Tacoma, WA 98447  
Phone: (253) 531-6900 Voice  
Website: [www.plu.edu](http://www.plu.edu)

### **University of Washington**

ASL Minor Program  
Department of Linguistics  
PO Box 352425  
Seattle, WA 98195-2425  
Phone: (206) 452-0085 Voice/VP  
Phone: (206) 543-2046 Voice  
Phone: (206) 685-7978 FAX  
E-mail: [lforshay@uw.edu](mailto:lforshay@uw.edu)  
Website: <https://catalyst.uw.edu/workspace/lforshay/10514/233160>

### **Washington State University**

Office of Admissions  
370 Lighty Student Services Bldg.  
P.O. Box 641067  
Pullman, WA 99164-1067  
Phone: (888) 468-6978 Voice  
Website: [www.wsu.edu](http://www.wsu.edu)

## **Private Sign Language Classes**

---

### **Christine Seymour, Deaf and Hard of Hearing Specialist - CS-DHRS**

10611 Canyon Rd E, #214  
Puyallup, WA 98373  
Phone: (253) 256-3938 VP  
Phone: (253) 256-4690 Voice  
E-mail: [Christine@CS-DHRS.org](mailto:Christine@CS-DHRS.org)  
Website: <http://www.cs-dhrs.org/index.html>

### **Hearing, Speech & Deafness Center (HSDC) - Bellingham**

114 West Magnolia Street Suite 106  
Bellingham, WA 98225  
(866) 647-0910 Toll-free Voice  
(877) 647-8508 Toll-free TTY  
(360) 255-7167 Voice/VP  
(360) 647-0910 Voice  
(360) 647-8508 TTY  
(360) 647-0923 FAX  
E-mail: [bellingham@hsrc.org](mailto:bellingham@hsrc.org)  
Website: [www.hsrc.org](http://www.hsrc.org)

### **Hearing, Speech & Deafness Center (HSDC) - Seattle**

1625 19th Avenue  
Seattle, WA 98122  
(888) 222-5036 Toll-free Voice  
(800) 761-2821 Toll-free TTY  
(206) 452-7953 Voice/VP  
(206) 323-5770 Voice  
(206) 388-1275 TTY  
(206) 328-6871 Fax  
E-mail: [seattle@hsrc.org](mailto:seattle@hsrc.org)  
Website: [www.hsrc.org](http://www.hsrc.org)

### **Sign2Me Early Learning Resources**

12125 Harbour Reach Drive, Suite D  
Mukilteo, WA 98275  
Phone: (425) 493-1903 Voice  
Phone: (425) 493-1904 FAX  
E-mail: [acrain@sign2me.com](mailto:acrain@sign2me.com)  
Website: <http://www.sign2me.com>

### **Southwest Washington Center of the Deaf and Hard of Hearing (SWCDHH) – Vancouver**

301 SE. Hearthwood Blvd.  
Vancouver, WA 98684  
(360) 334-5740 Voice/VP  
(360) 695-3364 Voice  
(360) 695-9720 TTY  
(360) 695-2706 FAX  
E-mail: [frontdesk@swcdhh.org](mailto:frontdesk@swcdhh.org)  
Website: [www.swcdhh.org](http://www.swcdhh.org)

## Topics

### **Visually Speaking**

320 E. Pine Street #317  
Seattle, WA 98122  
Phone: (323) 336-9305 Voice  
E-mail: info@visuallyspeaking.info  
E-mail: kellie@visuallyspeaking.info  
Website: www.visuallyspeaking.info

### **Washington School for the Deaf (WSD)**

611 Grand Boulevard  
Vancouver, WA 98661  
Phone: (800) 613-4228 Voice/TTY  
Phone: (360) 696-6525 Voice/TTY  
Phone: (360) 696-6291 Fax  
Website: www.wsd.wa.gov

## Telecommunications

---

### **Washington Relay Services**

PO Box 45301  
Olympia, WA 98504-5301  
Phone: (360) 339-7382 VP  
Phone: (360) 902-8000 Voice/TTY  
Phone: (800) 422-7930 Voice/TTY  
E-mail: askwashingtonrelay@dshs.wa.gov  
Website: <https://www.dshs.wa.gov/altsa/odhh/telecommunication-relay-services>

### **Washington Utilities and Transportation Commission**

1300 S. Evergreen Park Dr. SW  
Olympia, WA 98504-7250  
Phone: (360) 664-1160 Voice  
Phone: (800) 562-6150 Voice  
Phone: (800) 416-5289 TTY  
E-mail: info@wutc.wa.gov  
Website: www.wutc.wa.gov

## Transportation

---

### **Department of Licensing (DOL)**

**PO Box 9030**  
**Olympia, WA 98507**  
**Phone: (360) 902-3900 Voice**  
**Phone: (360) 664-0116 TTY**  
**Website: <http://www.dol.wa.gov/>**

### **Department of Transportation (DOT)**

310 Maple Park Avenue SE  
Olympia, WA 98501  
PO Box 47310  
Olympia, WA 98504-7310  
Phone: (855) 362-4232 Voice  
Phone: (360) 705-6849 FAX  
E-mail: [wsdotada@wsdot.wa.gov](mailto:wsdotada@wsdot.wa.gov)  
E-mail: [shawn.murinko@wsdot.wa.gov](mailto:shawn.murinko@wsdot.wa.gov)  
Website: [www.wsdot.wa.gov/accessibility](http://www.wsdot.wa.gov/accessibility)

### **Washington State Patrol (WSP)**

General Administration Building  
PO Box 42600  
Olympia, WA 98504  
Phone: (360) 596-4000 Voice  
Website: <http://www.wsp.wa.gov/>

### **Washington State Transportation Commission**

PO Box 47308  
Olympia, WA 98504  
Phone: (360) 705-7070 Voice  
Phone: (360) 705-6802 FAX  
E-mail: [transc@wsdot.wa.gov](mailto:transc@wsdot.wa.gov)  
Website: <http://www.wstc.wa.gov/>

# Index

## A

Able Opportunities, Inc. .... 22  
 Abused Deaf Women’s Advocacy Services (ADWAS) ..... 11, 30  
 Access Washington ..... 8  
 Administrative Office of the Courts (AOC) ..... 9  
 Adult Protective Services ..... 6  
 Aging and Long-Term Support Administration (AL TSA) ..... 6, 33  
 All Hands Community I nterpreting Services ..... 27  
 Alliance of People with disAbilities ..... 13  
 American Red Cross Chapters of Washington State ..... 21  
 Andrews, Roxie ..... 26  
 ASL Interpreter Network ..... 27  
 ASL Professionals ..... 27  
 Association of Late Deafened Adults (ALDA) – Puget Sound Chapter .... 10  
 Association of Washington Housing Authorities ..... 24  
 Away with Words Interpreter Services, LLC ..... 27

## B

Bates Technical College ..... 16  
 Bazinet, Paula ..... 26  
 Behavioral Health and Service Integration Administration (BHSIA) ..... 6  
 Bellevue College ..... 19, 36  
 Beth Hirnle, NCC, HMHC ..... 30  
 Big Bend Community College ..... 17  
 Boivin, Johnne ..... 26  
 Boote, Alyson ..... 26  
 Brewster, Melissa Wood ..... 31  
 Bunze, Katherine ..... 26

## C

Cascadia Community College ..... 17, 34  
 Center for Childhood Deafness and Hearing Loss (CCDHL), Outreach Team ..... 15  
 Center for Independence ..... 13

Center for Independence North Sound.... 13  
 Central Washington University ..... 19, 36  
 Central Washington Comprehensive Mental Health – Yakima County ..... 31  
 Centralia Community College ..... 17, 36  
 Child Study and Treatment Center ..... 6  
 Children’s Administration (CA) ..... 6  
 Christine Seymour, Deaf and Hard of Hearing Specialist (CS-DHHS) ..... 37  
 Clark College ..... 36  
 City of Bellingham ADA Coordinator ..... 28  
 Client Assistant Program (CAP) ..... 22, 28  
 Clover Park Technical College ..... 17  
 Coalition of Responsible Disabled (CORD) ..... 13  
 Cochlear Implant Support Group – South Sound ..... 10  
 CODAs Plus ..... 27  
 Columbia Language Services ..... 27  
 Columbia River Mental Health Services – Clark County ..... 31  
 Commission on African American Affairs (CAAA) ..... 14  
 Commission on Asian Pacific American Affairs (CAPAA) ..... 14  
 Commission on Hispanic Affairs (CHA) ..... 14  
 Common Ground – Seattle Office ..... 24  
 Common Ground – Spokane Office ..... 24  
 Communication Access Real Time Translation (CART) ..... 10  
 Complaint Resolution for Residential Care Services Adult Protective Services ..... 6  
 Cross Cultural Communications ..... 27  
 CS Deaf and Hard of Hearing Specialist – (CS-DHHS) ..... 21

## D

Deaf Access Washington – Yakima County ..... 31  
 Deaf-Blind Service Center (DBSC) ..... 4, 12  
 deaffriendly.com ..... 32  
 Deaf Spotlight ..... 33  
 Debbie Lasky-Fink, MA, LMHC, MA, Mental Health Counseling ..... 31

Department of Corrections (DOC) ..... 25  
 Department of Corrections, Prison Pet Partnership Program (PPPP) ..... 34  
 Department of Early Learning (DEL) ..... 23  
 Department of Enterprise Services (DES) ..... 8, 10  
 Department of Health (DOH) ..... 25  
 Department of Labor and Industries (LNI) ..... 26  
 Department of Licensing (DOL) ..... 38  
 Department of Services for the Blind (DSB) ..... 12  
 Department of Transportation (DOT) ..... 38  
 Department of Veterans Affairs (DVA) ..... 26  
 Developmental Disabilities Administration (DDA) ..... 7  
 Disability Rights Washington ..... 28  
 Division of Vocational Rehabilitation (DVR) ..... 22, 24  
 Dogs for the Deaf, Inc. .... 34

## E

Early Support for Infants and Toddlers (ESIT) ..... 23  
 Easter Seals Washington ..... 13  
 Eastern State Hospital ..... 6  
 Eastern Washington University ..... 20, 36  
 Economic Services Administration (ESA) ..... 7  
 Edmonds Community College ..... 17, 34  
 Edmonds School District ..... 15  
 Emergency Email Network ..... 21  
 Employment Security Department (ESD) ..... 22, 25  
 EndHarm Report Child/Adult Abuse ..... 6  
 Enhanced Vision, Vision Matters, LLC ..... 10  
 Everett Community College ..... 17, 34  
 Evergreen Plaza Building ..... 9  
 Evergreen School District ..... 16  
 Evergreen State College ..... 19, 36

# Index

## F

Fair Housing Center of Washington..... 25  
Farmers Insurance ..... 32  
Federal Way Public Schools ..... 16  
Financial Services Administration (FSA) ..... 7

## G

Goodwill – Work Opportunity  
Center – Longview ..... 22  
Governor’s Committee on Disability  
Issues and Employment (GCDE) ..... 22  
Governor’s Office of Indian  
Affairs (GOIA) ..... 14  
Grays Harbor College ..... 36  
Green River Community College ..... 17, 34

## H

HandDancer Interpreter Services ..... 27  
Health Care Authority (HCA) ..... 26  
Hearing Loss Association of  
Washington (HLA-WA) ..... 11, 24  
Hearing Loss Association of WA –  
HLA-WA Chapter Listing ..... 11  
Hearing, Speech and Deafness  
Center (HSDC) - Bellingham ..... 4, 37  
Hearing, Speech and Deafness  
Center (HSDC) – Seattle ..... 4, 37  
Hearing, Speech & Deafness  
Center (HSDC) – Tacoma ..... 5  
Hearing, Speech & Deafness  
Center Store (HSDC) ..... 10  
Helen Keller National Center –  
Northwestern Region (HKNC) ..... 12  
Heritage University ..... 37  
Highline Community College ..... 17, 35  
Highline Public Schools ..... 16  
Hirnle, Beth ..... 30  
Housing and Urban Development in  
Washington ..... 25

## I

Inland Northwest Lighthouse (INL) ..... 12  
International Hearing Dog, Inc. .... 34

## J

## K

King County Bar Association ..... 28  
King County Office of Civil Rights ..... 28  
Kool, Sheryl ..... 32  
Kosanovich, Jane ..... 26  
Kosanovich, Michael ..... 26

## L

Lasky-Fink, Debbie ..... 31  
Law Office of Michael J. Izak, PLLC ..... 29  
Let’s Loop Seattle ..... 11  
Lighthouse for the Blind, Inc. (LH) ..... 12  
Listen and Talk – Education  
for Children with Hearing Loss ..... 15

## M

MacLean, Polly ..... 26  
Marlowe, Wendy ..... 32  
Melick Psychological Services,  
Amy Melick ..... 31  
Melissa Wood Brewster, LICSW ..... 31  
Metro Parks Tacoma ..... 33  
Metzger, Jacqui ..... 31  
The Moose Project ..... 21, 23

## N

National Domestic Violence  
Hotline through ADWAS ..... 11  
Nexus – Spokane ..... 4, 27  
North Seattle Community College ..... 17  
North Sound Mental  
Health Administration ..... 31  
North Thurston Public Schools ..... 16  
Northwest ADA Center ..... 29  
Northwest Fair Housing Alliance ..... 25  
Northwest Justice Project ..... 29  
Northwest Lions Foundation  
for Sight and Hearing ..... 24  
Northwest School for Deaf  
and Hard of Hearing Children ..... 15  
Norton, Anne ..... 30

## O

Office of Administrative  
Hearings (OAH) ..... 8  
Office of the Attorney General (AG) ..... 8  
Office of Civil Legal Aid (OCLA) ..... 9  
Office of Diversity and Inclusion (ODI) ..... 14  
Office of Education  
Ombudsman (OEO) ..... 8, 14, 29  
Office of Financial Management (OFM) ..... 8  
Office of the Governor (GOV) ..... 8  
Office of Indian Policy (OIP) ..... 14  
Office of the Insurance  
Commissioner (OIC) ..... 8  
Office of Minority and Women’s  
Business Enterprise (MWBE) ..... 14  
Office of the Secretary of State (SOS) ..... 8  
Office of Superintendent  
of Public Instruction (OSPI) ..... 8, 14  
Olympic Community College ..... 35  
Origami OWI Custom Jewelry ..... 32  
Orting High School ..... 16

## P

Pacific Lutheran University ..... 20, 37  
Pave ..... 23  
PEPNet – Postsecondary  
Education Program Network ..... 21  
Pet Partners (formerly Delta  
Society National Service Dog Center) ..... 34  
Pierce College ..... 19, 36  
Pierce College Fort Steilacoom ..... 19  
Public Disclosure Commission (PDC) ..... 8  
Puget Sound Association of the Deaf ..... 11  
Puget Sound Regional Services  
(Supported Living Program) ..... 13  
Puyallup School District ..... 16

## Q

## R

Renton Technical College ..... 18, 35  
Rehabilitation Administration (RA) ..... 7

# Index

## S

Salveo Counseling Center – Megan Erasmus .....	31
Seattle Central Community College .....	18, 35
Seattle Children’s Hospital .....	31
Seattle Counseling Services .....	32
Seattle Office for Civil Rights .....	29
Seattle Pacific University .....	20
Seattle Parks and Recreation – Specialized Programs .....	33
Seattle Public Library Deaf Services .....	11
Seattle Public Schools .....	16
Seattle University .....	20
Sertoma .....	11
Services and Enterprise Support Administration (SESA) .....	7
Shoreline Community College .....	18, 35
Siegel, Verna .....	26
Sign2Me Early Learning Resources .....	37
SignOn, Hearing, Speech & Deafness Center .....	27
Skagit Valley College, Mount Vernon Campus .....	36
Skagit Valley College – Whidbey Island Campus .....	36
Sound Mental Health – Anne Baldwin .....	32
South Puget Sound Community College .....	18, 35
South Seattle Community College .....	18
Southeastern Washington Center of the Deaf and Hard of Hearing (SEWSCDHH) .....	27
Southwest Washington Center of the Deaf and Hard of Hearing (SWCDHH) – Vancouver .....	5, 37
Spokane Falls Community College .....	28
Spokane Community College .....	18, 35
Spokane Falls Community College .....	18, 35
Stanton Captioning and Reporting CART/Captioning Services .....	10
State Hospitals .....	6
State Independent Living Council (SILC) ..	13
Strada Communication, Inc. ....	28
Summit Assistance Dogs .....	34

## T

Tacoma Community College .....	18
Tacoma Human Rights and Human Services Department .....	29
Tacoma School District #10 .....	16
Turtle Heart Coaching & Retreats .....	32

## U

Universal Language Service, Inc. ....	28
University of Washington – ASL Minor Program .....	37
University of Washington .....	20
University of Washington – Tacoma .....	20
US. Department of Justice, United State Attorney’s Office	
Western District of Washington - Seattle .....	29
Western District of Washington - Tacoma .....	29
Eastern District of Washington – Spokane .....	29
Eastern District of Washington – Yakima .....	30
U.S. Equal Employment Opportunity Commission .....	30

## V

Victim Support Services .....	12
Visually Speaking .....	38

## W

Walla Walla Community College .....	19, 35
Washington Access Fund (WAF) .....	10, 24
Washington Assistive Technology Act Program through Hearing, Speech, and Deafness Center; University of Washington Technology & Disability Studies .....	24
Washington American Sign Language Teachers Association (WA-ASLTA) .....	34
Washington Assistive Technology Act Program (WATAP) .....	10
Washington Association of the Deaf (WSAD) .....	11

Washington Chapter of Gallaudet University Alumni Association (WAGUAA) .....	11
Washington Communication Access Project (WASH-CAP) .....	30
Washington Community Reinvestment Association .....	25
Washington Connection – Your Link to Services .....	8
Washington Court Reporters Association (WCRA) .....	10
Washington Low Income Housing Alliance .....	25
Washington Military Department (WMD) Emergency Management Division .....	22
Washington Relay Services .....	38
Washington School for the Deaf (WSD) .....	15, 38
Washington Sensory Disabilities Services (WSDS) .....	12, 15
Washington Sensory Disabilities Services (WSDCC) – Deaf and Hard of Hearing Students Educational Services .....	15, 23
Washington Speech-Language-Hearing Association (WSLHA) .....	24
Washington Talking Book and Braille Library .....	13
Washington Utilities and Transportation Commission .....	38
Washington Vocational Services – Employment Services .....	22
Washington State Accessible Outdoor Recreation Guide .....	33
Washington State Arts Commission (WSAC) .....	33
Washington State Bar Association .....	30
Washington State Community Action Partnerships .....	25
Washington State Deaf-Blind Citizens (WSDBC) .....	12
Washington State Deaf Senior Citizens (WSDSC) .....	11, 33
Washington State Department of Fish and Wildlife (DFW) .....	33
Washington State Department of Health (DOH) – Early Hearing Loss Detection, Diagnosis and Intervention Program - (EHDDI) .....	23

# Index

Washington State Department of Natural Resources (DNR) .....33

Washington State Developmental Disabilities Council (WSDDC)..... 13

Washington State Hands and Voices (WSHV) .....23

Washington State Housing Finance Commission .....25

Washington State Human Rights Commission – Olympia Office .....30

Washington State Human Rights Commission – Spokane Office..... 30

Washington State Human Rights Commission – Yakima Office.....30

Washington State Law Library (WSLL).....9

Washington State Legislature .....9

Washington State Parks and Recreation Commission .....33

Washington State Patrol (WSP).....38

Washington State Registry of Interpreters for the Deaf .....28

Washington State Rehabilitation Council (SRC).....22

Washington State School for the Blind (WSSB)..... 12, 15

Washington State Transportation Commission.....38

Washington State University.....37

Washington State University – Pullman....20

Washington State University – Spokane Campus.....20

Washington State University – Tri-Cities Campus.....21

Washington State University – Vancouver Campus.....21

Wenatchee Valley Community College..... 19, 36

Wendy B. Marlowe, Ph.D., ABPP, Clinical Neuropsychology..... 32

Western Oregon University .....21, 28

Western State Hospital.....6

Western Washington University.....21

Whatcom Community College .....35

Williams Investments (Housing/Apartments) .....25

Wills, Dov .....31

Wilson Clinical Services .....32

Windermere Real Estate .....32

Work Opportunities – Lynwood.....23

Work Opportunities – Mountlake Terrace 23

## X Y

Yakima Valley Community College .... 19, 35

Yakima Valley Hearing and Speech Center .....32

### Regional Service Centers (RSCs).....4

Deaf-Blind Service Center (DBSC) .....4

Nexus – Spokane .....4

Hearing, Speech & Deafness Center (HSDC) – Bellingham .....4

Hearing, Speech & Deafness Center (HSDC) – Seattle .....4

Hearing, Speech & Deafness Center (HSDC) – Tacoma.....5

Southwest Washington Center of the Deaf and Hard of Hearing (SWCDHH) – Vancouver .....5

### Department of Social and Health Services (DSHS).....6

EndHarm Report Child/Adult Abuse .....6

Aging and Long-Term Support Administration (ALSA) .....6

Complaint Resolution for Residential Care Services

Adult Protective Services .....6

Behavioral Health and Service Integration Administration (BHSIA).....6

State Hospitals.....6

Children’s Administration (CA) .....6

Developmental Disabilities Administration (DDA).....7

Economic Services Administration (ESA) ....7

Financial Services Administration (FSA).....7

Rehabilitation Administration (RA).....7

Services and Enterprise Support Administration (SESA) .....7

### State Hospitals .....6

Child Study and Treatment Center .....6

Eastern State Hospital .....6

Western State Hospital.....6

### State Government Agencies .....6

Access Washington .....8

Washington Connection – Your Link to Services.....8

### Executive Branch.....8

Office of the Governor (GOV) .....8

Office of the Attorney General (AG).....8

Office of Education Ombudsman (OEO) ....8

Office of the Secretary of State (SOS) .....8

Office of Superintendent of Public Instruction (OSPI) .....8

Office of the Insurance Commissioner (OIC) .....8

### General Government .....8

Department of Enterprise Services (DES)....8

Office of Administrative Hearings (OAH) ...8

Office of Financial Management (OFM).....8

Public Disclosure Commission (PDC).....8

### Judiciary Branch .....9

Administrative Office of the Courts (AOC).....9

Office of Civil Legal Aid (OCLA).....9

Evergreen Plaza Building .....9

Washington State Law Library (WSLL).....9

### Legislative Branch .....9

Washington State Legislature .....9

### Assistive Technology..... 10

Enhanced Vision, Vision Matters, LLC ..... 10

Hearing, Speech & Deafness Center Store (HSDC) ..... 10

Washington Access Fund (WAF) ..... 10

Washington Assistive Technology Act Program (WATAP) ..... 10



# Index

<b>Caption</b> .....	<b>10</b>	Washington State Deaf-Blind Citizens (WSDBC).....	12	Washington Sensory Disabilities Services (WSDS) .....	15
Washington Court Reporters Association (WCRA) .....	10	Washington State School for the Blind (WSB) .....	12	Washington Sensory Disabilities Services (WSDCC) – Deaf and Hard of Hearing Students Educational Services .....	15
Department of Enterprise Services (DES).....	10	Washington Talking Book and Braille Library .....	13	Washington State School for the Blind (WSSB).....	15
Communication Access Real Time Translation (CART).....	10	<b>Disabilities</b> .....	<b>13</b>	<b>PRIVATE SCHOOLS</b> .....	<b>15</b>
Stanton Captioning and Reporting CART/Captioning Services .....	10	Alliance of People with disAbilities .....	13	Listen and Talk – Education for Children with Hearing Loss .....	15
<b>Community Organizations</b> .....	<b>10</b>	Center for Independence .....	13	Northwest School for Deaf and Hard of Hearing Children .....	15
Association of Late Deafened Adults (ALDA) – Puget Sound Chapter ....	10	Center for Independence North Sound.....	13	<b>School Districts</b> .....	<b>15</b>
Cochlear Implant Support Group – South Sound .....	10	Coalition of Responsible Disabled (CORD) .....	13	Edmonds School District.....	15
Hearing Loss Association of Washington (HLA-WA).....	11	Easter Seals Washington .....	13	Evergreen School District.....	16
Hearing Loss Association of WA – HLA-WA Chapter Listing .....	11	Puget Sound Regional Services (Supported Living Program).....	13	Federal Way Public Schools .....	16
Let’s Loop Seattle .....	11	State Independent Living Council (SILC) .....	13	Highline Public Schools .....	16
Puget Sound Association of the Deaf .....	11	Washington State Developmental Disabilities Council (WSDDC).....	13	North Thurston Public Schools.....	16
Seattle Public Library Deaf Services.....	11	<b>Diversity</b> .....	<b>14</b>	Orting High School .....	16
Sertoma.....	11	Commission on African American Affairs (CAAA) .....	14	Puyallup School District.....	16
Washington Association of the Deaf (WSAD) .....	11	Commission on Asian Pacific American Affairs (CAPAA) .....	14	Seattle Public Schools.....	16
Washington Chapter of Gallaudet University Alumni Association (WAGUAA).....	11	Commission on Hispanic Affairs (CHA)....	14	Tacoma School District #10 .....	16
Washington State Deaf Senior Citizens (WSDSC) .....	11	Governor’s Office of Indian Affairs (GOIA).....	14	<b>Disability Support Services at Community and Technical Colleges</b> .....	<b>16</b>
<b>Crisis Intervention</b> .....	<b>11</b>	Office of Diversity and Inclusion (ODI) .....	14	Bates Technical College.....	16
Abused Deaf Women’s Advocacy Services (ADWAS).....	11	Office of Indian Policy (OIP) .....	14	Big Bend Community College .....	17
National Domestic Violence Hotline through ADWAS .....	11	Office of Minority and Women’s Business Enterprise (MWBE) .....	14	Cascadia Community College .....	17
Victim Support Services.....	12	<b>Education</b> .....	<b>14</b>	Centralia Community College .....	17
<b>Deaf-Blind</b> .....	<b>12</b>	Office of Education Ombudsman (OEO).....	14	Clover Park Technical College.....	17
Deaf-Blind Service Center (DBSC).....	12	Office of Superintendent of Public Instruction (OSPI) .....	14	Edmonds Community College.....	17
Department of Services for the Blind (DSB) .....	12	<b>K-12 Programs</b>		Everett Community College .....	17
Helen Keller National Center – Northwestern Region (HKNC) .....	12	<b>STATEWIDE</b>		Green River Community College .....	17
Inland Northwest Lighthouse (INL).....	12	Center for Childhood Deafness and Hearing Loss (CCDHL), Outreach Team .....	15	Highline Community College .....	17
Lighthouse for the Blind, Inc. (LH) .....	12	Washington School for the Deaf (WSD)...	15	North Seattle Community College.....	17
Washington Sensory Disabilities Services (WSDS) .....	12			Renton Technical College .....	18
				Seattle Central Community College .....	18
				Shoreline Community College.....	18
				South Puget Sound Community College.....	18
				South Seattle Community College.....	18



# Index

Spokane Community College..... 18	<b>Employment – page 22</b>	<b>Hearing Loss.....24</b>
Spokane Falls Community College ..... 18	Able Opportunities, Inc. .... 22	Hearing Loss Association of Washington (HLA-WA)..... 24
Tacoma Community College ..... 18	Client Assistant Program (CAP) ..... 22	Washington Speech-Language- Hearing Association (WSLHA)..... 24
Walla Walla Community College..... 19	Division of Vocational Rehabilitation (DVR)..... 22	
Wenatchee Valley Community College.... 19	Employment Security Department (ESD) ..... 22	<b>Housing.....24</b>
Yakima Valley Community College ..... 19	Goodwill – Work Opportunity Center – Longview..... 22	Association of Washington Housing Authorities ..... 24
<b>Disability Support Services at Colleges and Universities..... 19</b>	Governor’s Committee on Disability Issues and Employment (GCDE)..... 22	Common Ground – Seattle Office ..... 24
Bellevue College ..... 19	Washington State Rehabilitation Council (SRC)..... 22	Common Ground – Spokane Office ..... 24
Evergreen State College ..... 19	Washington Vocational Services – Employment Services ..... 22	Fair Housing Center of Washington..... 25
Pierce College ..... 19	Work Opportunities – Lynwood..... 23	Housing and Urban Development in Washington ..... 25
Pierce College Fort Steilacoom ..... 19	Work Opportunities – Mountlake Terrace ..... 23	Northwest Fair Housing Alliance..... 25
Central Washington University ..... 19		Washington State Community Action Partnerships..... 25
Eastern Washington University ..... 20	<b>Families and Children .....23</b>	Washington Community Reinvestment Association..... 25
Pacific Lutheran University..... 20	Department of Early Learning (DEL)..... 23	Washington State Housing Finance Commission ..... 25
Seattle Pacific University..... 20	Early Support for Infants and Toddlers (ESIT) ..... 23	Washington Low Income Housing Alliance ..... 25
Seattle University ..... 20	The Moose Project ..... 23	Williams Investments (Housing/Apartments) ..... 25
University of Washington ..... 20	Pave..... 23	
University of Washington – Tacoma..... 20	Washington State Department of Health (DOH) – Early Hearing Loss Detection, Diagnosis and Intervention Program - (EHDDI) ..... 23	<b>Human &amp; Social Services .....25</b>
Washington State University – Pullman.... 20	Washington Sensory Disabilities Services (WSDS) ..... 23	Department of Corrections (DOC) ..... 25
Washington State University – Spokane Campus..... 20	Washington State Hands and Voices (WSHV) ..... 23	Employment Security Department (ESD) ..... 25
Washington State University – Tri-Cities Campus..... 21		Department of Health (DOH)..... 25
Washington State University – Vancouver Campus..... 21	<b>Hearing Aids – Financial Assistance ..... page 24</b>	Health Care Authority (HCA)..... 26
Western Oregon University ..... 21	Division of Vocational Rehabilitation..... 24	Department of Labor and Industries (LNI) ..... 26
Western Washington University..... 21	Northwest Lions Foundation for Sight and Hearing..... 24	Department of Veterans Affairs (DVA) ..... 26
<b>Other Educational Program.....21</b>	Washington Access Fund (WAF) ..... 24	<b>Interpreting .....26</b>
PEPNet – Postsecondary Education Program Network ..... 21	Washington Assistive Technology Act Program through Hearing, Speech, and Deafness Center; University of Washington Technology & Disability Studies ..... 24	<b>Independent Contractors</b>
The Moose Project ..... 21		Andrews, Roxie..... 26
<b>Emergency Management .....21</b>		Bazinet, Paula ..... 26
American Red Cross Chapters of Washington State ..... 21		Boivin, Johnne ..... 26
CS Deaf and Hard of Hearing Specialist – (CS-DHHRS) ..... 21		Boote, Alyson ..... 26
Emergency Email Network ..... 22		Bunze, Katherine ..... 26
Washington Military Department (WMD) Emergency Management Division ..... 22		Kosanovich, Jane ..... 26
		Kosanovich, Michael ..... 26

# Index

MacLean, Polly.....	26	US. Department of Justice, United State Attorney's Office Western District of Washington - Seattle.....	29	Sound Mental Health, Anne Baldwin.....	3
Siegel, Verna.....	26	Western District of Washington - Tacoma.....	29	Wendy B. Marlowe.....	32
<b>Interpreter Referral Agencies.....</b>	<b>27</b>	Eastern District of Washington – Spokane.....	29	Wilson Clinical Services.....	32
All Hands Community Interpreting Services.....	27	Eastern District of Washington – Yakima.....	30	<b>Other – Businesses.....</b>	<b>32</b>
ASL Interpreter Network.....	27	U.S. Equal Employment Opportunity Commission.....	30	deaffriendly.com.....	32
ASL Professionals.....	27	Washington Communication Access Project (WASH-CAP).....	30	Farmers Insurance.....	32
Away with Words Interpreter Services, LLC.....	27	Washington State Bar Association.....	30	Origami OWI Custom Jewelry.....	32
CODAs Plus.....	27	Washington State Human Rights Commission – Olympia Office.....	30	Turtle Heart Coaching & Retreats.....	32
Columbia Language Services.....	27	Washington State Human Rights Commission – Spokane Office.....	30	Yakima Valley Hearing and Speech Center.....	32
Cross Cultural Communications.....	27	Washington State Human Rights Commission – Yakima Office.....	30	Windermere Real Estate.....	32
HandDancer Interpreter Services.....	27	<b>Mental Health.....</b>	<b>30</b>	<b>Recreation.....</b>	<b>33</b>
NEXUS.....	27	Abused Deaf Women's Advocacy Services (ADWAS).....	30	Deaf Spotlight.....	33
SignOn, Hearing, Speech & Deafness Center.....	27	Anne B Norton.....	30	Metro Parks Tacoma.....	33
South Eastern Washington Service Center of the Deaf and Hard of Hearing – Pasco (SEWSCDHH).....	27	Beth Hirnle.....	30	Seattle Parks and Recreation – Specialized Programs.....	33
Strada Communication, Inc.....	28	Central Washington Comprehensive Mental Health – Yakima County.....	31	Washington State Accessible Outdoor Recreation Guide.....	33
Universal Language Service, Inc.....	28	Columbia River Mental Health Services – Clark County.....	31	Washington State Arts Commission (WSAC).....	33
Washington State Registry of Interpreters for the Deaf.....	28	Deaf Access Washington – Yakima County.....	31	Washington State Department of Fish and Wildlife (DFW).....	33
<b>Interpreter Training Programs.....</b>	<b>28</b>	Debbie Lasky-Fink.....	31	Washington State Department of Natural Resources (DNR).....	33
Spokane Falls Community College.....	28	Dov Wills.....	31	Washington State Parks and Recreation Commission.....	33
Western Oregon University.....	28	Jacqui Metzger.....	31	<b>Senior Citizens / Aging.....</b>	<b>33</b>
<b>Legal.....</b>	<b>28</b>	Melick Psychological Services, Amy Melick.....	31	Aging and Long-Term Support Administration (AL TSA).....	33
City of Bellingham ADA Coordinator.....	28	Melissa Wood Brewster.....	31	Washington State Deaf Senior Citizens (WSDSC).....	33
Client Assistant Program (CAP).....	28	North Sound Mental Health Administration.....	31	<b>Service Animals.....</b>	<b>34</b>
Disability Rights Washington.....	28	Salveo Counseling Center – Megan Erasmus.....	31	Department of Corrections, Prison Pet Partnership Program (PPPP).....	34
King County Bar Association.....	28	Seattle Children's Hospital.....	31	Dogs for the Deaf, Inc.....	34
King County Office of Civil Rights.....	28	Seattle Counseling Services.....	32	International Hearing Dog, Inc.....	34
Law Office of Michael J. Izak, PLLC.....	29	Sheryl E. Kool.....	32	Pet Partners (formerly Delta Society National Service Dog Center).....	34
Northwest ADA Center.....	29			Summit Assistance Dogs.....	34
Northwest Justice Project.....	29				
Office of Education Ombudsman (OEO).....	29				
Seattle Office for Civil Rights.....	29				
Tacoma Human Rights and Human Services Department.....	29				

# Index

<b>Sign Language.....34</b>	<b>Private Sign Language Classes.....37</b>
Washington American Sign Language Teachers Association (WA-ASLTA)..... 34	Christine Seymour, Deaf and Hard of Hearing Specialist (CS-DHRS) ..... 37
<b>Sign Language Classes at Community and Technical Colleges ....34</b>	Hearing, Speech and Deafness Center (HSDC) - Bellingham ..... 37
Cascadia Community College ..... 34	Hearing, Speech and Deafness Center (HSDC) – Seattle ..... 37
Edmonds Community College..... 34	Sign2Me Early Learning Resources ..... 37
Everett Community College ..... 34	Southwest Washington Center of the Deaf and Hard of Hearing (SWCDHH) –Vancouver ..... 37
Green River Community College ..... 34	Visually Speaking ..... 38
Highline Community College ..... 35	Washington School for the Deaf ..... 38
Olympic Community College..... 35	
Renton Technical College ..... 35	<b>Telecommunications .....38</b>
Seattle Central Community College ..... 35	Washington Relay Services ..... 38
Shoreline Community College..... 35	Washington Utilities and Transportation Commission..... 38
South Puget Sound Community College .35	
Spokane Community College..... 35	<b>Transportation.....38</b>
Spokane Falls Community College ..... 35	Department of Licensing (DOL) ..... 38
Whatcom Community College..... 35	Department of Transportation (DOT) ..... 38
Yakima Valley Community College ..... 35	Washington State Patrol (WSP)..... 38
Walla Walla Community College ..... 35	Washington State Transportation Commission..... 38
<b>Sign Language Classes at Colleges..... 36</b>	
Bellevue College ..... 36	
Centralia College ..... 36	
Clark College ..... 36	
Grays Harbor College..... 36	
Pierce College ..... 36	
Skagit Valley College – Whidbey Island Campus..... 36	
Skagit Valley College, Mount Vernon Campus ..... 36	
Wenatchee Valley College..... 36	
<b>Sign Language Classes at Universities ..... 36</b>	
Central Washington University ..... 36	
Eastern Washington University ..... 36	
Evergreen State College ..... 36	
Heritage University..... 37	
Pacific Lutheran University..... 37	
University of Washington – ASL Minor Program..... 37	
Washington State University..... 37	



