
Step-by-Step Installation Instructions for USCB_Tools.exe

International Programs Center for Demographic
and Economic Studies (IPCDES)

November 2014

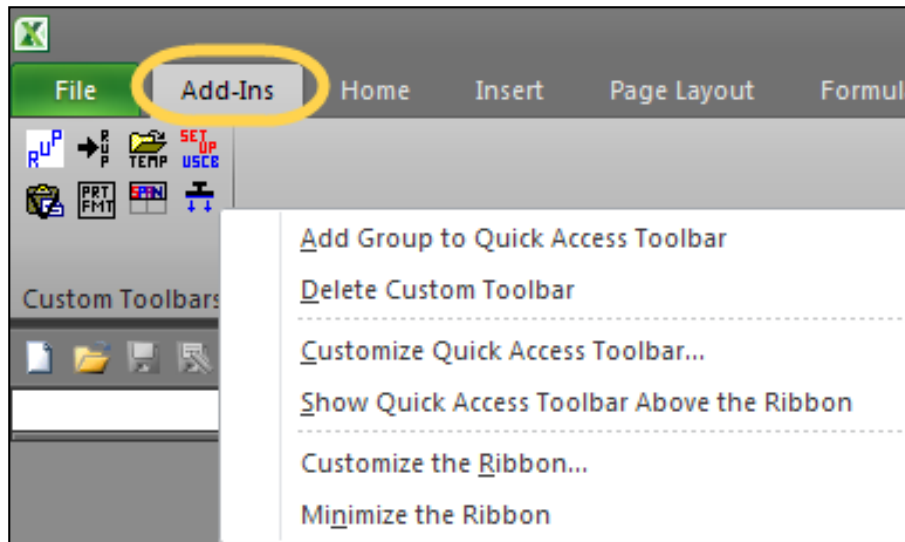
Software

- Population Analysis System (PAS)
 - www.census.gov/population/international/software/pas/
- Rural-Urban Projection (RUP) Program
 - www.census.gov/population/international/software/rup/
- Subnational Projections Toolkit (SPToolkit)
 - www.census.gov/population/international/software/SPToolkit/

Instructions

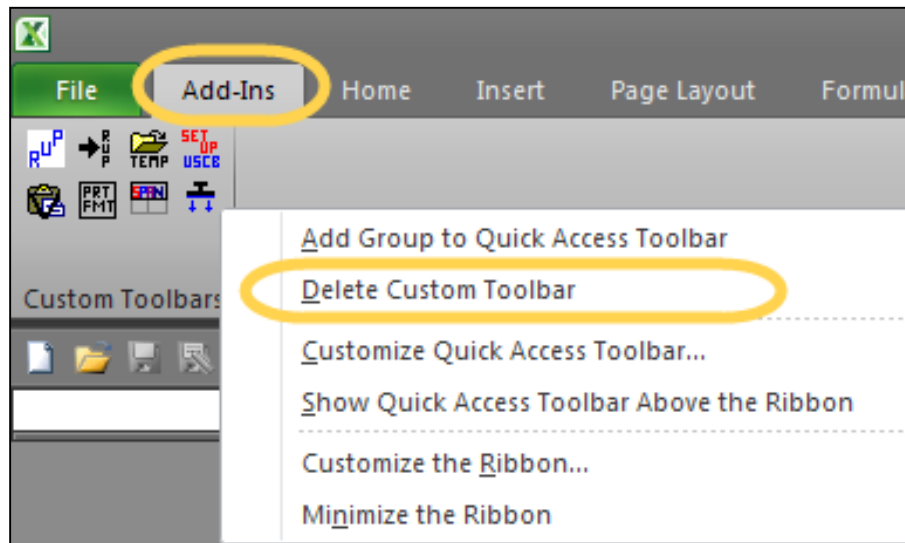
1. Remove old RUP/PAS buttons from Excel (optional)
2. Install USCB_Tools.exe
3. Adjust Excel settings
4. Software removal (optional)

Step 1: Remove Old RUP/PAS Buttons (optional)

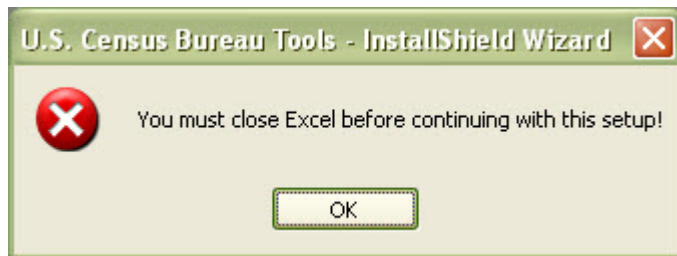


- If previous versions of RUP and/or PAS exist on your personal computer (PC), manually delete them (to help avoid any future confusion with new versions of RUP and/or PAS).
- Then, open Excel.
- Click on the Add-Ins tab in the Ribbon.
- Each row of 4 buttons is a “Custom Toolbar.”

Step 1: Remove Old RUP/PAS Buttons (optional)



- Right click on or near one of the buttons in the first row.
- Select “Delete Custom Toolbar.”
- Repeat for subsequent rows.
- Close Excel before continuing.








Step 2: Install USCB_Tools.exe

- Download [USCB_Tools.exe](#) to begin installing the population estimates and projections software (PAS, RUP, and SPToolkit) on your PC.
- Run the program, and follow the installation steps.
 - The default installation location will be a \US Census Bureau Tools\ subdirectory under Documents (or My Documents).
- You may be prompted with “You have old RUP toolbars on your machine? Click OK to remove them.”
 - Clicking “OK” (recommended) will complete the removal of remnants of previous installations of RUP and/or PAS in Excel.

Step 2: Install USCB_Tools.exe

- The installer will create the following subfolders beneath the \US Census Bureau Tools\ folder on your PC:
 - \RUP\, which contains the program files (RUP, RUPAGG, and RUPCOMB) needed to create projections.
 - \Templates\, which contains all of the Microsoft Excel workbooks in subject-divided subfolders.
 - \Documentation\, which contains workbook and program documentation.
 - **PAMvi and PAMvii**: PAS methodology and workbook descriptions
 - **RUPUsersGuide 2013**: RUP user's guide and additional resources
CTBL32, LTCSRMig, MIGSUB, PROJE032, PROJTFR32, RUPSubAdj, RUPCompare, RUPSTCompare, SALGST, and SPToolkitUsersGuideVer2, method descriptions, and method guides
 - \Samples\, which contains sample RUP input files.


Step 2: Install USCB_Tools.exe

- Open Excel.
- On the Add-Ins tab, you should see a new Custom Toolbar that looks like this: 
- The first button,  , opens RUPEX.
- The second button,  , converts Excel data into RUP formatted data in a new text file.
- The third button,  , opens the PAS and SPToolkit templates on your PC.
- The fourth button,  , unhides the USCBtoolStart.xls workbook.


Step 2: Install USCB_Tools.exe

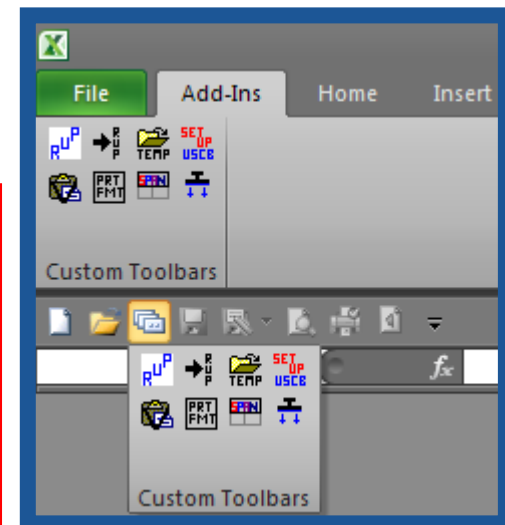
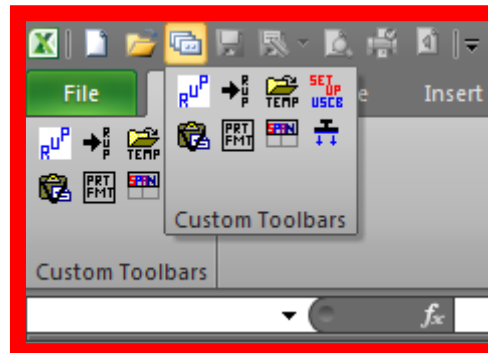
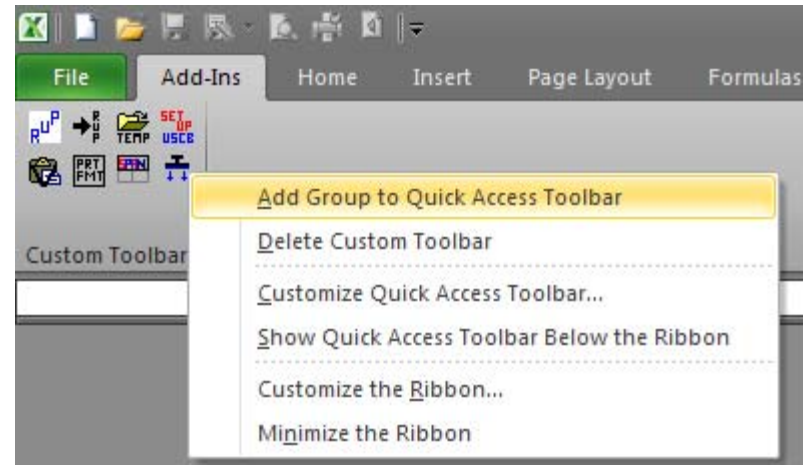
- The first time you open Excel, you will see this workbook: “USCBtoolStart.xls.”

| | A | B |
|----|--|--|
| 1 | U.S. Census Bureau Excel Application Setup | |
| 2 | | |
| 3 | RUP program location: | C:\Program Files\US Census Bureau\RUP\ |
| 4 | Location of templates: | C:\Program Files\US Census Bureau\Templates\ |
| 5 | | |
| 6 | | |
| 7 | | |
| 8 | | |
| 9 | | |
| 10 | | |
| 11 | | |
| 12 | | |

- Click on the button, “Save settings and hide workbook.”
- You can unhide this workbook and change the RUP program and/or template location settings by either:
 - Selecting the View Tab → Unhide, then “USCBtoolStart.xls” and clicking “OK,”
 - Or, by clicking on the Custom Toolbar button: 

Step 3: Adjust Excel Settings (optional)

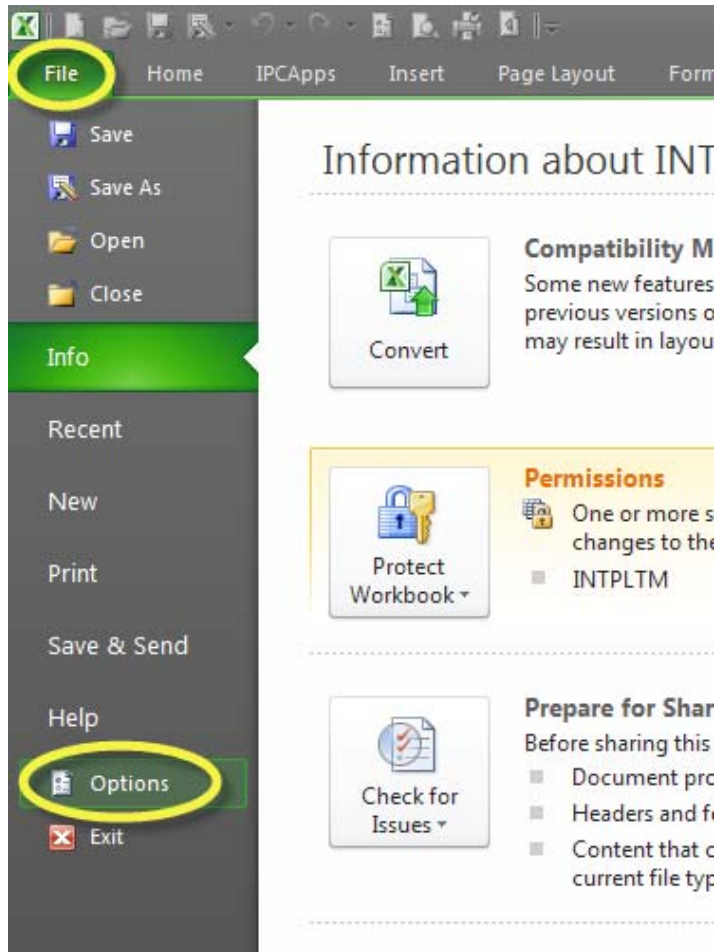
- In the Add-Ins tab, **right click** on the label “Custom Toolbars.”
- Select “Add Group to Quick Access Toolbar.”
- You can access the toolbars by clicking the “Custom Toolbars” icon  (**above** or **below** the ribbon).



Step 3: Adjust Excel Settings (1997-2003)

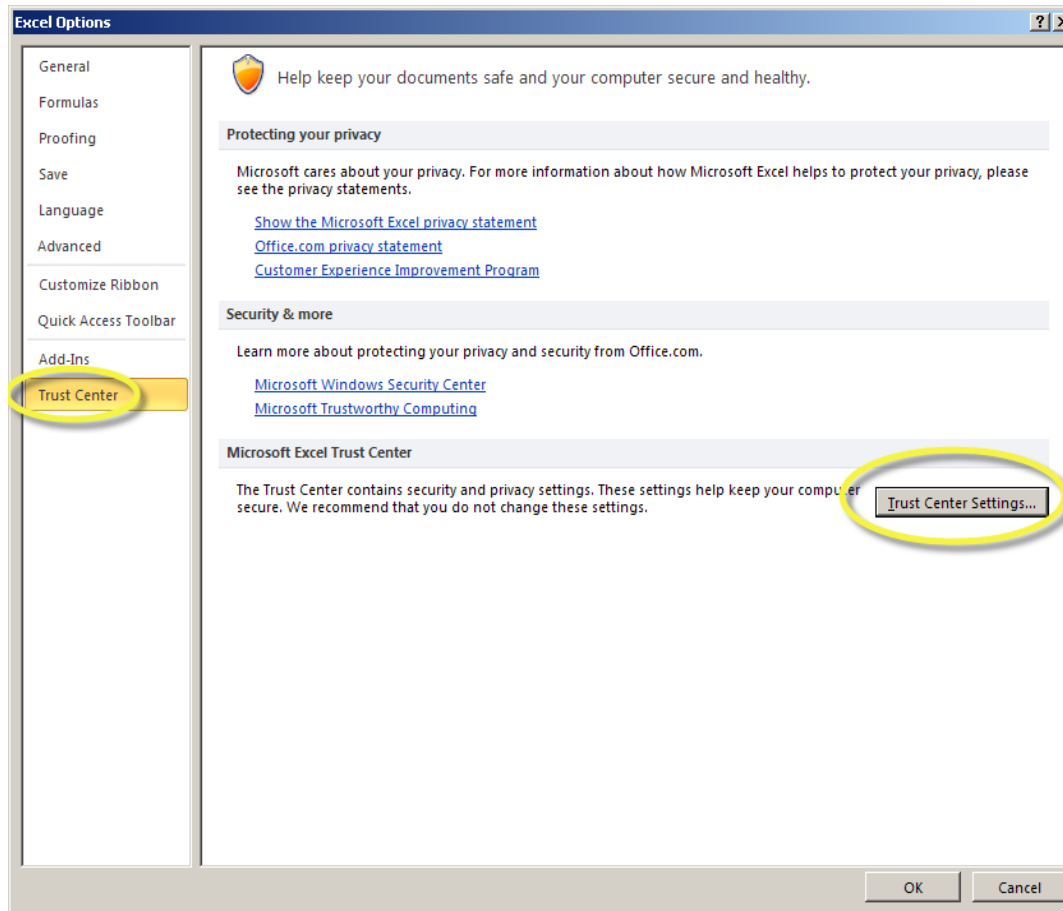
- Office 2000 or earlier:
 - Set security for Excel to medium (assuming choices are “High,” “Medium,” and “Low”).
 - From within Excel, choose Tools → Macro → Security → Security Level = Medium.
- Office 2003:
 - If four levels of Security are offered as choices, choose “Low.” Experience has demonstrated that Medium Security is still excessive in this case.
- All files should be saved as “.xls” by default.

Step 3: Adjust Excel Settings (2007 or Later)



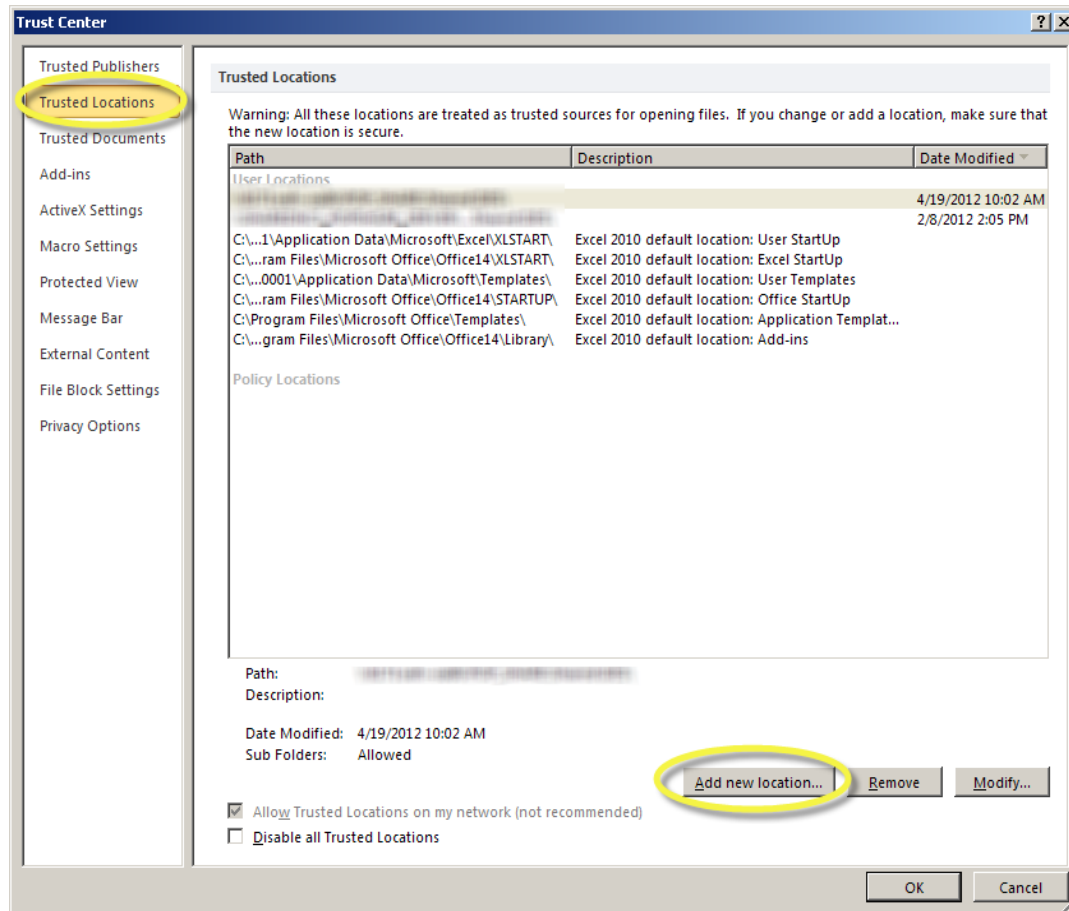
- Many USCB_Tools workbooks contain macros. By default, Excel disables macros. To enable USCB_Tools macros, one must add “Trusted Locations.”
- To add Trusted Locations:
 - Office/File Menu Button
 - Excel Options

Step 3: Adjust Excel Settings (2007 or Later)



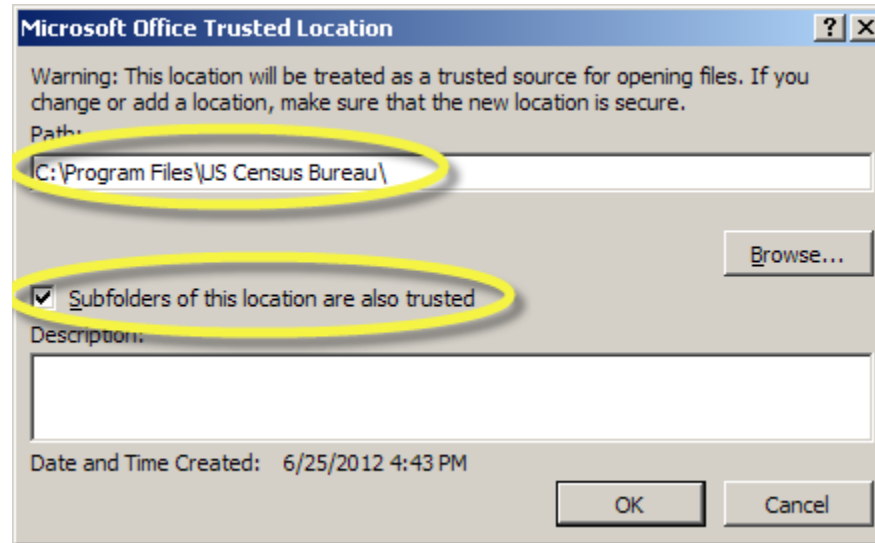
- Trust Center
- Click “Trust Center Settings.”

Step 3: Adjust Excel Settings (2007 or Later)



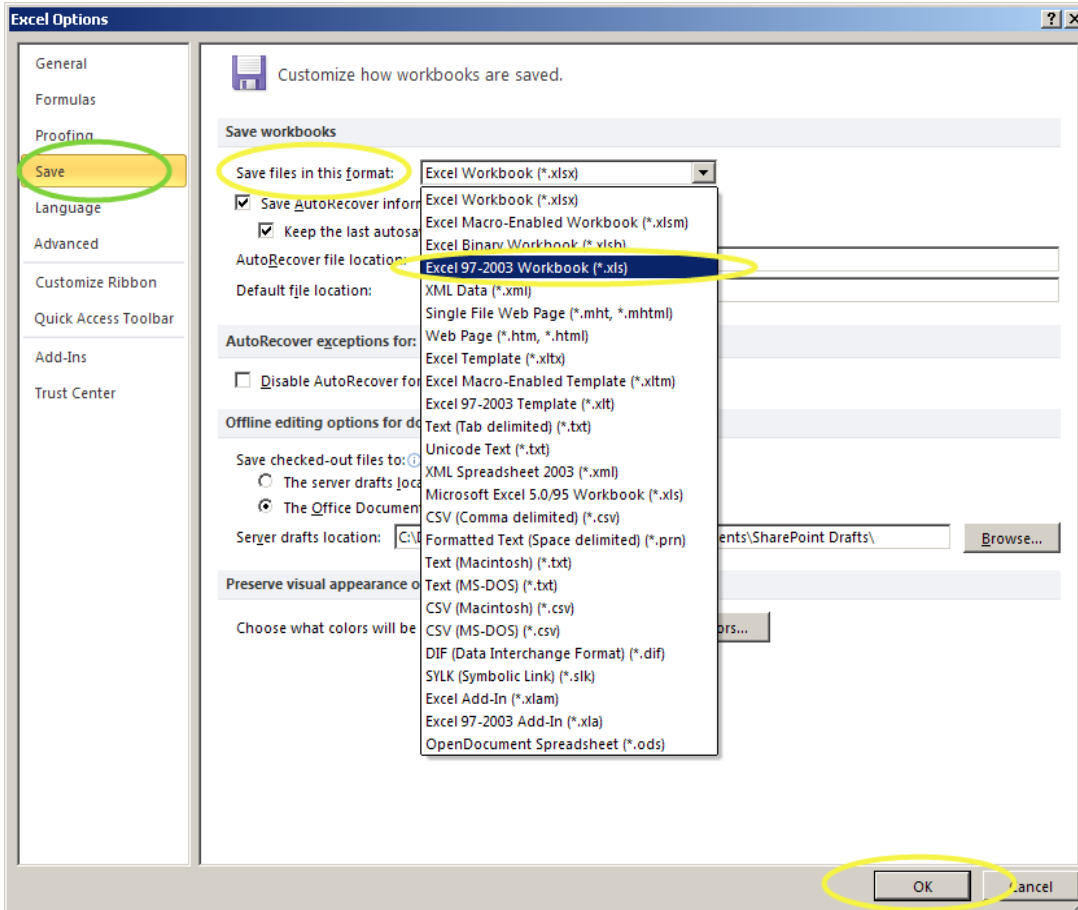
- Trusted Locations
- Click “Add New Location...”

Step 3: Adjust Excel Settings (2007 or Later)



- Enter or browse for the program location:
 - Example: C:\Program Files\US Census Bureau\
 - Be sure to select “Subfolders of this location are also trusted.”
 - Click “OK” to make this a Trusted Location.
- Repeat the previous step for the \US Census Bureau\ folder in your Documents or My Documents folder.

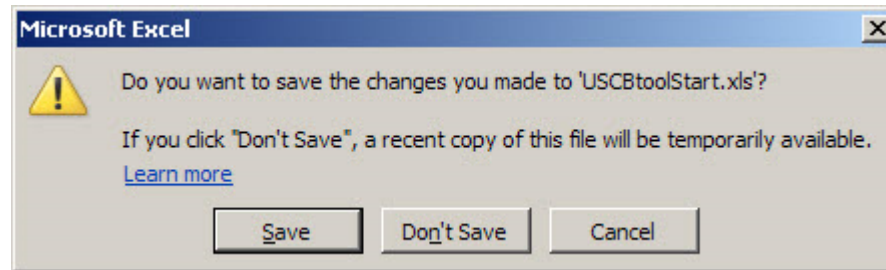
Step 3: Adjust Excel Settings (2007 or Later)



- Excel’s default setting for saving workbooks is “Excel Workbook (*.xlsx).” This setting disables all macros.
- To enable macros:
 - Options → Save → “Save files in this format:”
 - Change to “Excel 97-2003 Workbook (*.xls)”
 - Click “OK.”

Step 3: Adjust Excel Settings (All Versions)

- The “Save settings and hide workbook” button (Slide 9) should have already saved the necessary settings and hidden the workbook.
- Close Excel. If you get the warning shown below, click “Save.”



Step 4: Software Removal (optional)

To remove all of these programs from your PC:

- Start → Settings → Control Panel → Add/Remove Programs (or Program Manager)
 - Uninstall USCB_Tools.exe

Contact U.S. Census Bureau International Programs

- For more information on USCB Tools, contact the IPCDES staff
 - pop.ipc.des.web@census.gov